

Anti-Galectin 3 兔多克隆抗体

K133738-1 -20°C



产品信息

蛋白质全称	半乳糖凝集素 3
别名	LGALS3, CBP35, GAL3, GALBP, GALIG, L31, LGALS2, MAC2, lectin, Galactoside binding soluble 3, Galectin 3, Gal-3, 35 kDa lectin, L-31, Galactose-specific lectin 3, IgE-binding protein
免疫原	小鼠 Galectin 3 重组蛋白
Uniprot ID	P16110
抗体亚型	IgG
纯化方式	亲和纯化
预测分子量 / 观测分子量	28 kDa / 30 kDa

应用

WB 免疫印迹

物种：人, 小鼠, 大鼠

稀释比：1: 500-1: 1000

阳性样品：胃, 结肠

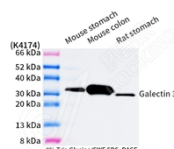
背景

Galactose-specific lectin which binds IgE. May mediate with the alpha-3, beta-1 integrin the stimulation by CSPG4 of endothelial cells migration. Together with DMBT1, required for terminal differentiation of columnar epithelial cells during early embryogenesis (By similarity). In the nucleus: acts as a pre-mRNA splicing factor. Involved in acute inflammatory responses including neutrophil activation and adhesion, chemoattraction of monocytes/macrophages, opsonization of apoptotic neutrophils, and activation of mast cells.

储存条件

储存条件：自收到之日起 -20°C 下储存一年，避免反复冻融。
储存缓冲液：含 0.15% ProClin300 防腐剂, 100 μg/mL 牛血清白蛋白和 50% 甘油的磷酸盐缓冲液。

图像



WB 检测 Galectin 3 蛋白(货号 K133738-1).
 样品: 经 RIPA 裂解液(货号 KSG2002)处理的蛋白质.
 封闭: 3% 脱脂牛奶(货号 KSGC310001)溶于 TBST 溶液,
 室温孵育 1 小时.
 一抗: 1: 500 稀释, 4°C 孵育过夜.
 二抗: HRP 标记山羊抗兔 IgG (H+L) (货号 KB69909), 1:
 5000 稀释, 室温孵育 1 小时.

For Research Use Only!

Ver. No.: V1-202603