

Anti-alpha Actinin 兔多克隆抗体

K133690 -20°C



产品信息

蛋白质全称	α-辅肌动蛋白 1
别名	Alpha-actinin cytoskeletal isoform, F-actin cross-linking protein, actinin, Non-muscle alpha-actinin-1, ACTN1, actinin 1 smooth muscle, Actn1a, BDPLT15, I79_004057
免疫原	小鼠 alpha actinin 1 重组蛋白
Uniprot ID	Q7TPR4
抗体亚型	IgG
纯化方式	亲和纯化
预测分子量 / 观测分子量	103 kDa / 103 kDa

应用

WB 免疫印迹

物种：人，小鼠，大鼠
 稀释比：1: 2000-1: 4000
 阳性样品：胃，肺

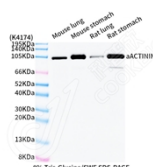
背景

Alpha actinins belong to the spectrin gene superfamily which represents a diverse group of cytoskeletal proteins, including the alpha and beta spectrins and dystrophins. Alpha actinin is an actin-binding protein with multiple roles in different cell types. In nonmuscle cells, the cytoskeletal isoform is found along microfilament bundles and adherens-type junctions, where it is involved in binding actin to the membrane. In contrast, skeletal, cardiac, and smooth muscle isoforms are localized to the Z-disc and analogous dense bodies, where they help anchor the myofibrillar actin filaments.

储存条件

储存条件：自收到之日起 -20°C下储存一年，避免反复冻融。
储存缓冲液：含 0.15% ProClin300 防腐剂, 100 μg/mL 牛血清白蛋白和 50%甘油的磷酸盐缓冲液。

图像



WB 检测 alpha Actinin 蛋白(货号 K133690).
 样品: 经 RIPA 裂解液(货号 KSG2002)处理的蛋白质.
 封闭: 3%脱脂牛奶(货号 KSGC310001)溶于 TBST 溶液,
 室温孵育 1 小时.
 一抗: 1: 2000 稀释, 4°C 孵育过夜.
 二抗: HRP 标记山羊抗兔 IgG (H+L) (货号 KB69909), 1:
 5000 稀释, 室温孵育 1 小时.

For Research Use Only!

Ver. No.: V1-202603