

Anti-S100A4 兔多克隆抗体

K134191 -20°C



产品信息

蛋白质全称	S100 钙结合蛋白 A4
别名	S100A4, 18A2, 42A, CAPL, FSP1, MTS1, P9KA, PEL98, S100 calcium binding protein A4
免疫原	小鼠 S100A4 重组蛋白
Uniprot ID	P07091
抗体亚型	IgG
纯化方式	亲和纯化
亚细胞定位	分泌型, 细胞核
预测分子量 / 观测分子量	12 kDa / 12 kDa

应用

WB 免疫印迹

物种: 人, 小鼠, 大鼠
 稀释比: 1: 500-1: 1000
 阳性样品:

IHC/IF 免疫组织化学/免疫荧光

物种: 人, 小鼠, 大鼠
 稀释比: 1: 1000-1: 2000
 阳性样品: 肺, 肺癌, 睾丸

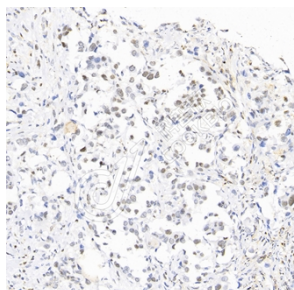
背景

The protein encoded by this gene is a member of the S100 family of proteins containing 2 EF-hand calcium-binding motifs. S100 proteins are localized in the cytoplasm and/or nucleus of a wide range of cells, and involved in the regulation of a number of cellular processes such as cell cycle progression and differentiation. S100 genes include at least 13 members which are located as a cluster on chromosome 1q21. This protein may function in motility, invasion, and tubulin polymerization. Chromosomal rearrangements and altered expression of this gene have been implicated in tumor metastasis.

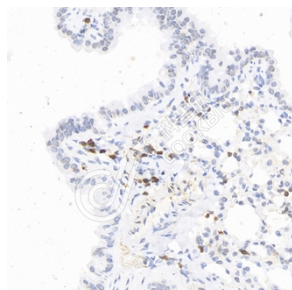
储存条件

储存条件: 自收到之日起 -20°C下储存一年, 避免反复冻融。
储存缓冲液: 含 0.15% ProClin300 防腐剂, 100 µg/mL 牛血清白蛋白和 50%甘油的磷酸盐缓冲液。

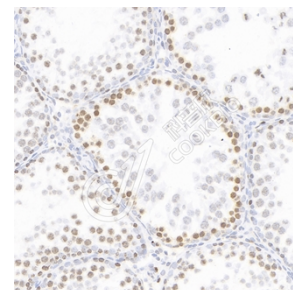
图像



IHC 检测 S100A4 蛋白(货号 K134191).
 样品: 人肺癌, 4%多聚甲醛 (货号 KSG1101) 固定 12-24 小时.
 抗原修复: 柠檬酸抗原修复液(干粉, pH 6.0) (KSG1201), 98°C, 20 分钟.
 一抗: 1: 1500 稀释, 4°C 孵育过夜.
 二抗: S-vision 免疫组化多聚二抗(山羊抗兔),即用型 (货号 KB3906), 室温孵育 20 分钟.



IHC 检测 S100A4 蛋白(货号 K134191).
 样品: 小鼠肺, 4%多聚甲醛 (货号 KSG1101) 固定 12-24 小时.
 抗原修复: 柠檬酸抗原修复液(干粉, pH 6.0) (KSG1201), 98°C, 20 分钟.
 一抗: 1: 1500 稀释, 4°C 孵育过夜.
 二抗: S-vision 免疫组化多聚二抗(山羊抗兔),即用型 (货号 KB3906), 室温孵育 20 分钟.



IHC 检测 S100A4 蛋白(货号 K134191).
 样品: 大鼠睾丸, 4%多聚甲醛 (货号 KSG1101) 固定 12-24 小时.
 抗原修复: 柠檬酸抗原修复液(干粉, pH 6.0) (KSG1201), 98°C, 20 分钟.
 一抗: 1: 1500 稀释, 4°C 孵育过夜.
 二抗: S-vision 免疫组化多聚二抗(山羊抗兔),即用型 (货号 KB3906), 室温孵育 20 分钟.

For Research Use Only!

Ver. No.: V1-202603