

# Anti-EGFR 兔多克隆抗体

K133252-2 -20°C



## 产品信息

蛋白质全称	表皮生长因子受体
别名	EGFR, ERBB, ERBB1, HER1, NISBD2, PIG61, mENA, epidermal growth factor receptor, EGF receptor
免疫原	KLH 偶联的小鼠 EGFR 合成肽
Uniprot ID	Q01279
抗体亚型	IgG
纯化方式	亲和纯化
预测分子量 / 观测分子量	134 kDa / 175 kDa

## 应用

### WB 免疫印迹

物种：人, 小鼠, 大鼠

稀释比：1: 500-1: 1000

阳性样品：A549 细胞

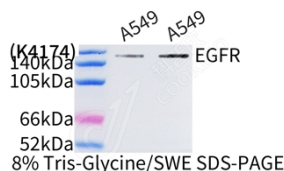
## 背景

The protein encoded by this gene is a transmembrane glycoprotein that is a member of the protein kinase superfamily. This protein is a receptor for members of the epidermal growth factor family. EGFR is a cell surface protein that binds to epidermal growth factor. Binding of the protein to a ligand induces receptor dimerization and tyrosine autophosphorylation and leads to cell proliferation. Mutations in this gene are associated with lung cancer.

## 储存条件

**储存条件：**自收到之日起 -20°C下储存一年，避免反复冻融。  
**储存缓冲液：**含 0.15% ProClin300 防腐剂, 100 μg/mL 牛血清白蛋白和 50%甘油的磷酸盐缓冲液。

## 图像



WB 检测 EGFR 蛋白(货号 K133252-2).  
 样品: 经 RIPA 裂解液(货号 KSG2002)处理的蛋白质.  
 封闭: 3%脱脂牛奶(货号 KSGC310001)溶于 TBST 溶液,  
 室温孵育 1 小时.  
 一抗: 1: 1000 稀释, 4°C 孵育过夜.  
 二抗: HRP 标记山羊抗兔 IgG (H+L) (货号 KB69909), 1:  
 5000 稀释, 室温孵育 1 小时.

For Research Use Only!

Ver. No.: V1-202603