

Anti-Endothelin 1 兔多克隆抗体

K134671 -20°C


产品信息

蛋白质全称	内皮素-1
别名	EDN1, endothelin 1, ET 1 Big endothelin 1, ET1, HDLCQ7, PPET1, Preproendothelin 1, ARCND3, ET1, ET-1, QME, Endothelin 1
免疫原	小鼠 Endothelin 1 重组蛋白
Uniprot ID	P22387
抗体亚型	IgG
纯化方式	亲和纯化
预测分子量 / 观测分子量	23 kDa / 23 kDa

应用

WB 免疫印迹

物种：小鼠

稀释比：1: 500-1: 1000

阳性样品：肾

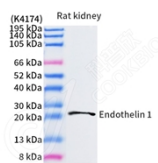
背景

Endothelin 1 (ET-1), also known as preproendothelin-1 (PPE1), is a potent vasoconstrictor that in humans is encoded by the EDN1 gene and produced by vascular endothelial cells. The protein encoded by this gene is proteolytically processed to release a secreted peptide termed endothelin 1. Endothelin 1 is one of three isoforms of human endothelin. Preproendothelin is precursor of the peptide ET-1. Endothelial cells convert preproendothelin to proendothelin and subsequently to mature endothelin, which the cells release.

储存条件

储存条件：自收到之日起 -20°C下储存一年，避免反复冻融。
储存缓冲液：含 0.15% ProClin300 防腐剂, 100 μg/mL 牛血清白蛋白和 50%甘油的磷酸盐缓冲液。

图像



WB 检测 Endothelin 1 蛋白(货号 K134671).
 样品: 经 RIPA 裂解液(货号 KSG2002)处理的蛋白质.
 封闭: 3%脱脂牛奶(货号 KSGC310001)溶于 TBST 溶液,
 室温孵育 1 小时.
 一抗: 1: 500 稀释, 4°C 孵育过夜.
 二抗: HRP 标记山羊抗兔 IgG (H+L) (货号 KB69909), 1:
 5000 稀释, 室温孵育 1 小时.

For Research Use Only!
Ver. No.: V1-202603