

Anti-PKC alpha 兔多克隆抗体

K134947 -20°C



产品信息

蛋白质全称	蛋白激酶 Ca型
别名	PRKCA, AAG6, PKC-alpha, PKCA, PRKACA, protein kinase C alpha, PKC1+/-, PKCalpha
免疫原	小鼠 protein kinase C alpha type 重组蛋白
Uniprot ID	P20444
抗体亚型	IgG
纯化方式	亲和纯化
亚细胞定位	细胞膜, 细胞核, 线粒体

应用

IHC/IF 免疫组织化学/免疫荧光

物种: 小鼠, 大鼠

稀释比: 1: 500-1: 4000

阳性样品: 心

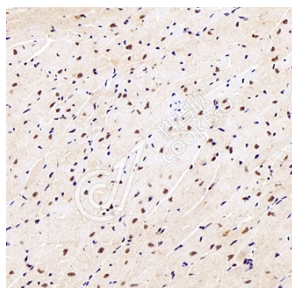
背景

Protein kinase C-alpha (PKC-α) is a specific member of the protein kinase family. These enzymes are characterized by their ability to add a phosphate group to other proteins, thus changing their function. PKC-α has been widely studied in the tissues of many organisms including drosophila, xenopus, cow, dog, chicken, human, monkey, mouse, pig, and rabbit. Many studies are currently being conducted investigating the structure, function, and regulation of this enzyme. The most recent investigations concerning this enzyme include its general regulation, hepatic function, and cardiac function.

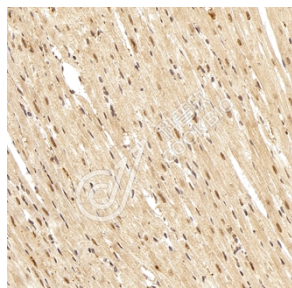
储存条件

储存条件: 自收到之日起 -20°C下储存一年, 避免反复冻融。
储存缓冲液: 含 0.15% ProClin300 防腐剂, 100 μg/mL 牛血清白蛋白和 50%甘油的磷酸盐缓冲液。

图像



IHC 检测 PKC alpha 蛋白(货号 K134947).
 样品: 小鼠心, 4%多聚甲醛(货号 KSG1101) 固定 12-24 小时.
 抗原修复: Tris-EDTA 抗原修复液(pH 9.0) (KSG1203), 98°C, 20 分钟.
 一抗: 1: 2300 稀释, 4°C 孵育过夜.
 二抗: S-vision 免疫组化多聚二抗(山羊抗兔), 即用型 (货号 KB3906), 室温孵育 20 分钟.



IHC 检测 PKC alpha 蛋白(货号 K134947).
 样品: 大鼠心, 4%多聚甲醛(货号 KSG1101) 固定 12-24 小时.
 抗原修复: Tris-EDTA 抗原修复液(pH 9.0) (KSG1203), 98°C, 20 分钟.
 一抗: 1: 2300 稀释, 4°C 孵育过夜.
 二抗: S-vision 免疫组化多聚二抗(山羊抗兔), 即用型 (货号 KB3906), 室温孵育 20 分钟.

For Research Use Only!

Ver. No.: V1-202603