

Anti-PP1C gamma 兔多克隆抗体

K135265 -20°C


产品信息

蛋白质全称	丝氨酸/苏氨酸蛋白磷酸酶 PP1 γ 催化亚基
别名	Ppp1cc, PPP1CC, PP-1G, PP1C, PPP1G, Protein phosphatase 1 catalytic subunit gamma, PP1C- γ
免疫原	小鼠 PP1C- γ 重组蛋白
Uniprot ID	P63087
抗体亚型	IgG
纯化方式	亲和纯化
预测分子量 / 观测分子量	37 kDa / 37 kDa

应用

WB 免疫印迹

物种: 人, 小鼠, 大鼠

稀释比: 1: 500-1: 1000

阳性样品: 脑

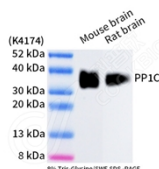
背景

Protein phosphatase 1 (PP1) is essential for cell division, and participates in the regulation of glycogen metabolism, muscle contractility and protein synthesis. Involved in regulation of ionic conductances and long-term synaptic plasticity. May play an important role in dephosphorylating substrates such as the postsynaptic density-associated Ca²⁺/calmodulin dependent protein kinase II. Component of the PTW/PP1 phosphatase complex, which plays a role in the control of chromatin structure and cell cycle progression during the transition from mitosis into interphase. PPP1CC has been shown to interact with PPP1R15A, SMARCB1, TLX1 and PPP1R9B.

储存条件

储存条件: 自收到之日起 -20°C下储存一年, 避免反复冻融。
储存缓冲液: 含 0.15% ProClin300 防腐剂, 100 μ g/mL 牛血清白蛋白和 50%甘油的磷酸盐缓冲液。

图像



WB 检测 PP1C gamma 蛋白(货号 K135265).
 样品: 经 RIPA 裂解液(货号 KSG2002)处理的蛋白质.
 封闭: 3%脱脂牛奶(货号 KSGC310001)溶于 TBST 溶液, 室温孵育 1 小时.
 一抗: 1: 500 稀释, 4°C 孵育过夜.
 二抗: HRP 标记山羊抗兔 IgG (H+L) (货号 KB69909), 1: 5000 稀释, 室温孵育 1 小时.

For Research Use Only!
Ver. No.: V1-202603