

# Anti-CrkL 兔多克隆抗体

K135268 -20°C



## 产品信息

蛋白质全称	Crk 样蛋白
别名	Crkl, CRKL, CRK like proto-oncogene, Adaptor protein
免疫原	小鼠 CrkL 重组蛋白
Uniprot ID	P47941
抗体亚型	IgG
纯化方式	亲和纯化
预测分子量 / 观测分子量	34 kDa / 39 kDa

## 应用

### WB 免疫印迹

物种: 人, 小鼠, 大鼠

稀释比: 1: 500-1: 1000

阳性样品: 脑

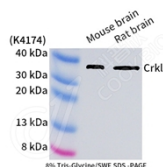
## 背景

V-CRK avian sarcoma virus CT10-homolog-like contains one SH2 domain and two SH3 domains. Crk-like protein encoded by the CRKL gene, has been shown to activate the RAS and JUN kinase signaling pathways and transform fibroblasts in a RAS-dependent fashion. It is a substrate of the BCR-ABL tyrosine kinase and plays a role in fibroblast transformation by BCR-ABL. In addition, CRKL has oncogenic potential. CrkL together with Crk participates in the Reelin signaling cascade downstream of DAB1.

## 储存条件

**储存条件:** 自收到之日起 -20°C下储存一年, 避免反复冻融。  
**储存缓冲液:** 含 0.15% ProClin300 防腐剂, 100 µg/mL 牛血清白蛋白和 50%甘油的磷酸盐缓冲液。

## 图像



WB 检测 CrkL 蛋白(货号 K135268).  
 样品: 经 RIPA 裂解液(货号 KSG2002)处理的蛋白质.  
 封闭: 3%脱脂牛奶(货号 KSGC310001)溶于 TBST 溶液,  
 室温孵育 1 小时.  
 一抗: 1: 500 稀释, 4°C 孵育过夜.  
 二抗: HRP 标记山羊抗兔 IgG (H+L) (货号 KB69909), 1:  
 5000 稀释, 室温孵育 1 小时.

For Research Use Only!

Ver. No.: V1-202603