

# Anti-TEF1/TEAD-1 兔多克隆抗体

K135457 -20°C



## 产品信息

蛋白质全称	转录增强因子 TEF-1
别名	Tead1, AA, NTEF-1, REF1, TCF-13, TCF13, TEAD-1, TEF-1, TEA domain transcription factor 1, TEAD1
免疫原	小鼠 TEAD-1 重组蛋白
Uniprot ID	P30051
抗体亚型	IgG
纯化方式	亲和纯化
预测分子量 / 观测分子量	48 kDa / 48 kDa

## 应用

### WB 免疫印迹

物种：人，小鼠，大鼠

稀释比：1: 500-1: 1000

阳性样品：胸腺

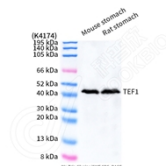
## 背景

Transcriptional enhancer factor TEF-1 also known as TEA domain family member 1 (TEAD1) and transcription factor 13 (TCF-13) is a protein encoded by the TEAD1 gene. TEAD1 was the first member of the TEAD family of transcription factors to be identified. It is a ubiquitous transcriptional enhancer factor that is a member of the TEA/ATTS domain family. This protein directs the transactivation of a wide variety of genes and, in placental cells, also acts as a transcriptional repressor. Mutations in this gene cause Sveinsson's chorioretinal atrophy.

## 储存条件

**储存条件：**自收到之日起 -20°C下储存一年，避免反复冻融。  
**储存缓冲液：**含 0.15% ProClin300 防腐剂, 100 µg/mL 牛血清白蛋白和 50%甘油的磷酸盐缓冲液。

## 图像



WB 检测 TEF1/TEAD-1 蛋白(货号 K135457).  
 样品: 经 RIPA 裂解液(货号 KSG2002)处理的蛋白质.  
 封闭: 3%脱脂牛奶(货号 KSGC310001)溶于 TBST 溶液,  
 室温孵育 1 小时.  
 一抗: 1: 500 稀释, 4°C 孵育过夜.  
 二抗: HRP 标记山羊抗兔 IgG (H+L) (货号 KB69909), 1:  
 5000 稀释, 室温孵育 1 小时.

For Research Use Only!

Ver. No.: V1-202603