

Anti-Aldolase C 兔多克隆抗体

K135475 -20°C



产品信息

蛋白质全称	果糖二磷酸醛缩酶 C
别名	Aldolase 3, Brain-type aldolase, Scrapie-responsive protein 2, Zebrin II, Aldoc, Aldo3, Scrg2, ALDOC, ALDC, Aldolase C, Aldolase, Fructose-bisphosphate C
免疫原	KLH 偶联的小鼠 Aldolase C 合成肽
Uniprot ID	P05063
抗体亚型	IgG
纯化方式	亲和纯化
预测分子量 / 观测分子量	40 kDa / 40 kDa

应用

WB 免疫印迹

物种: 人, 小鼠, 大鼠

稀释比: 1: 500-1: 1000

阳性样品: 海马区

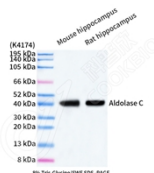
背景

ALDOC is one of the three aldolase isozymes (A, B, and C), encoded by three different genes. Aldolase C (fructose bisphosphate aldolase) is a key enzyme in the fourth step of glycolysis, as well as in the reverse pathway gluconeogenesis. It catalyzes the reversible conversion of fructose-1,6-bisphosphate to glyceraldehydes-3-phosphate (G3P), or glyceraldehyde, and dihydroxyacetone phosphate (DHAP) by aldol cleavage. As a result, it is a crucial player in ATP biosynthesis.

储存条件

储存条件: 自收到之日起 -20°C下储存一年, 避免反复冻融。
储存缓冲液: 含 0.15% ProClin300 防腐剂, 100 µg/mL 牛血清白蛋白和 50%甘油的磷酸盐缓冲液。

图像



WB 检测 Aldolase C 蛋白(货号 K135475).
 样品: 经 RIPA 裂解液(货号 KSG2002)处理的蛋白质.
 封闭: 3%脱脂牛奶(货号 KSGC310001)溶于 TBST 溶液,
 室温孵育 1 小时.
 一抗: 1: 500 稀释, 4°C 孵育过夜.
 二抗: HRP 标记山羊抗兔 IgG (H+L) (货号 KB69909), 1:
 5000 稀释, 室温孵育 1 小时.

For Research Use Only!

Ver. No.: V1-202603