

Anti-CD146 兔多克隆抗体

K135865 -20°C



产品信息

蛋白质全称	细胞表面糖蛋白 MUC18
别名	Gicerin, Melanoma cell adhesion molecule, Melanoma-associated antigen MUC18, CD146, Muc18, Mcam, MelCAM, Sendo1
免疫原	KLH 偶联的小鼠 CD146 合成肽
Uniprot ID	Q8R2Y2
抗体亚型	IgG
纯化方式	亲和纯化
预测分子量 / 观测分子量	72 kDa / 120 kDa

应用

WB 免疫印迹

物种：人，小鼠，大鼠

稀释比：1: 500-1: 1000

阳性样品：子宫

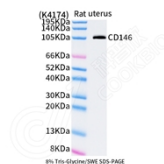
背景

MCAM is an immunoglobulin super family member originally described as a cell surface adhesion protein and marker of the progression and metastasis of melanoma. Expression of MCAM protein is seen in vascular endothelial cells, activated T lymphocytes, smooth muscle, and bone marrow stromal cells. Research studies demonstrate increased MCAM expression in endothelial cells from angiogenesis-related disorders, including inflammatory bowel disease, Crohn's disease, rheumatoid arthritis, tumors, and chronic renal failure.

储存条件

储存条件：自收到之日起 -20°C 下储存一年，避免反复冻融。
储存缓冲液：含 0.15% ProClin300 防腐剂, 100 µg/mL 牛血清白蛋白和 50% 甘油的磷酸盐缓冲液。

图像



WB 检测 CD146 蛋白(货号 K135865).
 样品: 经 RIPA 裂解液(货号 KSG2002)处理的蛋白质.
 封闭: 3%脱脂牛奶(货号 KSGC310001)溶于 TBST 溶液,
 室温孵育 1 小时.
 一抗: 1: 1000 稀释, 4°C 孵育过夜.
 二抗: HRP 标记山羊抗兔 IgG (H+L) (货号 KB69909), 1:
 5000 稀释, 室温孵育 1 小时.

For Research Use Only!

Ver. No.: V1-202603