

Anti-Cytokeratin 1 兔多克隆抗体

K1333051 -20°C


产品信息

蛋白质全称	II 型细胞角蛋白 1
别名	67 kDa cytokeratin, Cytokeratin-1, Keratin-1, CK-1, K1, Type-II keratin Kb1, Krt1, Krt2-1, EHK1, Keratin type II cytoskeletal 1
免疫原	KLH 偶联的小鼠 Cytokeratin 1 合成肽
Uniprot ID	P04104
抗体亚型	IgG
纯化方式	亲和纯化
预测分子量 / 观测分子量	66 kDa / 66 kDa

应用

WB 免疫印迹

物种：人，小鼠，大鼠

稀释比：1: 500-1: 1000

阳性样品：胎盘

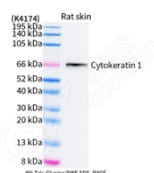
背景

Cytokeratin 1 is a heterotetramer of two type I as well as two type II keratins localized in the cell membrane and is generally associated with keratin-10. It has been suggested to regulate the activity of kinases such as PKC/SRC via binding to integrin beta-1 and the receptor of activated protein kinase C. Cytokeratin 1 and its heterodimer partner KRT10 are the major constituents of 4 intermediate filament cytoskeleton in suprabasal epidermis/keratinocytes, and their upregulation precedes expression of filaggrin and cornified envelope proteins.

储存条件

储存条件：自收到之日起 -20°C 下储存一年，避免反复冻融。
储存缓冲液：含 0.15% ProClin300 防腐剂, 100 μg/mL 牛血清白蛋白和 50% 甘油的磷酸盐缓冲液。

图像



WB 检测 Cytokeratin 1 蛋白(货号 K1333051).
 样品: 经 RIPA 裂解液(货号 KSG2002)处理的蛋白质.
 封闭: 3% 脱脂牛奶(货号 KSGC310001)溶于 TBST 溶液,
 室温孵育 1 小时.
 一抗: 1: 1000 稀释, 4°C 孵育过夜.
 二抗: HRP 标记山羊抗兔 IgG (H+L) (货号 KB69909), 1:
 5000 稀释, 室温孵育 1 小时.

For Research Use Only!
Ver. No.: V1-202603