

# Anti-Src 兔多克隆抗体

**K1333105** -20°C



## 产品信息

蛋白质全称	原癌基因 Src 酪氨酸蛋白激酶
别名	Proto-oncogene c-Src, pp60c-src, p60-Src, Src, ASV, Avian sarcoma virus, Tyrosine protein kinase SRC1, SRC1, SRC proto-oncogene, non receptor tyrosine kinase, THC6
免疫原	小鼠 Src 重组蛋白
Uniprot ID	P05480
抗体亚型	IgG
纯化方式	亲和纯化
亚细胞定位	细胞膜, 细胞质, 细胞核

## 应用

### IHC/IF 免疫组织化学/免疫荧光

物种: 人, 小鼠, 大鼠

稀释比: 1: 500-1: 4000

阳性样品: 脑, 乳腺癌

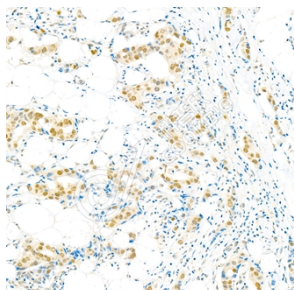
## 背景

SRC, also named as SRC1 and p60-Src, belongs to the protein kinase super family, Tyr protein kinase family and SRC subfamily. It is a non-receptor protein tyrosine kinase that plays pivotal roles in numerous cellular processes such as proliferation, migration, and transformation. In concert with PTK2B, SRC plays an important role in osteoclastic bone resorption. It promotes energy production in osteoclasts by activating mitochondrial cytochrome C oxidase. This gene is highly similar to the v-src gene of Rous sarcoma virus. This proto-oncogene may play a role in the regulation of embryonic development and cell growth. The protein encoded by this gene is a tyrosine-protein kinase whose activity can be inhibited by phosphorylation by c-SRC kinase.

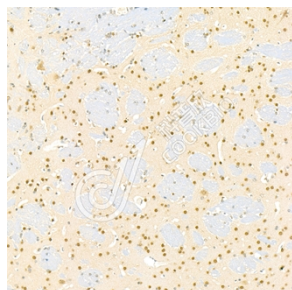
## 储存条件

**储存条件:** 自收到之日起 -20°C下储存一年, 避免反复冻融。  
**储存缓冲液:** 含 0.15% ProClin300 防腐剂, 100 µg/mL 牛血清白蛋白和 50%甘油的磷酸盐缓冲液。

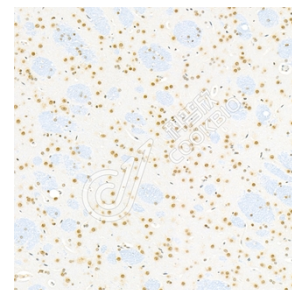
## 图像



IHC 检测 Src 蛋白(货号 K1333105).  
 样品: 人乳腺癌, 4%多聚甲醛(货号 KSG1101) 固定 12-24 小时.  
 抗原修复: 柠檬酸抗原修复液(干粉, pH 6.0) (KSG1201), 98°C, 20 分钟.  
 一抗: 1: 2300 稀释, 4°C 孵育过夜.  
 二抗: S-vision 免疫组化多聚二抗(山羊抗兔), 即用型(货号 KB3906), 室温孵育 20 分钟.



IHC 检测 Src 蛋白(货号 K1333105).  
 样品: 小鼠脑, 4%多聚甲醛(货号 KSG1101) 固定 12-24 小时.  
 抗原修复: 柠檬酸抗原修复液(干粉, pH 6.0) (KSG1201), 98°C, 20 分钟.  
 一抗: 1: 2300 稀释, 4°C 孵育过夜.  
 二抗: S-vision 免疫组化多聚二抗(山羊抗兔), 即用型(货号 KB3906), 室温孵育 20 分钟.



IHC 检测 Src 蛋白(货号 K1333105).  
 样品: 大鼠脑, 4%多聚甲醛(货号 KSG1101) 固定 12-24 小时.  
 抗原修复: 柠檬酸抗原修复液(干粉, pH 6.0) (KSG1201), 98°C, 20 分钟.  
 一抗: 1: 2300 稀释, 4°C 孵育过夜.  
 二抗: S-vision 免疫组化多聚二抗(山羊抗兔), 即用型(货号 KB3906), 室温孵育 20 分钟.

**For Research Use Only!**

**Ver. No.: V1-202603**