

Anti-UBE2E3 兔多克隆抗体

K1333609 -20°C



产品信息

蛋白质全称	泛素结合酶 E2 E3
别名	E2 ubiquitin-conjugating enzyme E3, UbcM2, Ubiquitin carrier protein E3, Ubce4, Ubiquitin-conjugating enzyme E2-23 kDa, Ubiquitin-protein ligase E3, Ube2e3, UBCH9
免疫原	小鼠 UBE2E3 重组蛋白
Uniprot ID	P52483
抗体亚型	IgG
纯化方式	亲和纯化
预测分子量 / 观测分子量	23 kDa / 23 kDa

应用

WB 免疫印迹

物种: 人, 小鼠, 大鼠

稀释比: 1: 1000-1: 1500

阳性样品: 睾丸

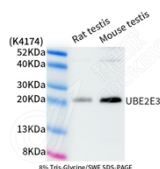
背景

The modification of proteins with ubiquitin is an important cellular mechanism for targeting abnormal or short-lived proteins for degradation. Ubiquitination involves at least three classes of enzymes: ubiquitin-activating enzymes or E1s, ubiquitin-conjugating enzymes, or E2s, and ubiquitin-protein ligases or E3s. UBE2E3 is a member of the E2 ubiquitin-conjugating enzyme family. Accepts ubiquitin from the E1 complex and catalyzes its covalent attachment to other proteins.

储存条件

储存条件: 自收到之日起 -20°C下储存一年, 避免反复冻融。
储存缓冲液: 含 0.15% ProClin300 防腐剂, 100 µg/mL 牛血清白蛋白和 50%甘油的磷酸盐缓冲液。

图像



WB 检测 UBE2E3 蛋白(货号 K1333609).
 样品: 经 RIPA 裂解液(货号 KSG2002)处理的蛋白质.
 封闭: 3%脱脂牛奶(货号 KSGC310001)溶于 TBST 溶液, 室温孵育 1 小时.
 一抗: 1: 1000 稀释, 4°C 孵育过夜.
 二抗: HRP 标记山羊抗兔 IgG (H+L) (货号 KB69909), 1: 5000 稀释, 室温孵育 1 小时.

For Research Use Only!

Ver. No.: V1-202603