

Anti-NOTCH3 兔多克隆抗体

K1333930 -20°C



产品信息

蛋白质全称	Notch 同源蛋白 3
别名	Notch 3, NOTCH3, Notch 3 extracellular truncation, Notch 3 intracellular domain, CADASIL, CASIL, Notch homolog 3, IMF2, LMNS
免疫原	KLH 偶联的小鼠 NOTCH3 合成肽
Uniprot ID	Q61982
抗体亚型	IgG
纯化方式	亲和纯化
预测分子量 / 观测分子量	244 kDa / 110 (cleaved) kDa

应用

WB 免疫印迹

物种：人
 稀释比：1: 100-1: 500
 阳性样品：MCF7 细胞

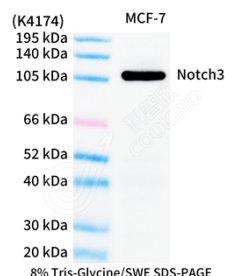
背景

NOTCH3 belongs to the NOTCH family. It functions as a receptor for membrane-bound ligands Jagged1, Jagged2 and Delta1 to regulate cell-fate determination. Upon ligand activation through the released notch intracellular domain (NICD) it forms a transcriptional activator complex with RBP-J kappa and activates genes of the enhancer of split locus. NOTCH3 affects the implementation of differentiation, proliferation and apoptotic programs. Defects in NOTCH3 are the cause of cerebral autosomal dominant arteriopathy with subcortical infarcts and leukoencephalopathy (CADASIL).

储存条件

储存条件：自收到之日起 -20°C下储存一年，避免反复冻融。
储存缓冲液：含 0.15% ProClin300 防腐剂, 100 µg/mL 牛血清白蛋白和 50%甘油的磷酸盐缓冲液。

图像



WB 检测 Notch3 蛋白(货号 K1333930).
 样品: 经 RIPA 裂解液(货号 KSG2002)处理的蛋白质.
 封闭: 3%脱脂牛奶(货号 KSGC310001)溶于 TBST 溶液,
 室温孵育 1 小时.
 一抗: 1: 1000 稀释, 4°C 孵育过夜.
 二抗: HRP 标记山羊抗兔 IgG (H+L) (货号 KB69909), 1:
 5000 稀释, 室温孵育 1 小时.

For Research Use Only!

Ver. No.: V1-202603