

Anti-Transferrin 兔多克隆抗体

K1333936 -20°C


产品信息

蛋白质全称	血清转铁蛋白
别名	Transferrin, Beta-1 metal-binding globulin, Liver regeneration-related protein LRRG03, Siderophilin, Tf
免疫原	KLH 偶联的大鼠 Transferrin 合成肽
Uniprot ID	P12346
抗体亚型	IgG
纯化方式	亲和纯化
亚细胞定位	分泌型
预测分子量 / 观测分子量	77 kDa / 77-80 kDa

应用

WB 免疫印迹

物种: 小鼠, 大鼠
 稀释比: 1: 500-1: 800
 阳性样品:

IHC/IF 免疫组织化学/免疫荧光

物种: 人, 小鼠
 稀释比: 1: 2000-1: 4000
 阳性样品: 纤维化肝脏, 肝癌

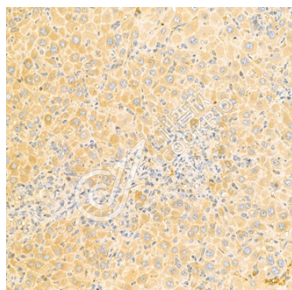
背景

Transferrin is a single polypeptide chain glycoprotein and is a member of the iron binding family of proteins. It is thought to have been created as a result of an ancient gene duplication event that led to generation of homologous C and N-terminal domains each of which binds one ion of ferric iron. The function of this protein is to transport iron from the intestine, reticuloendothelial system, and liver parenchymal cells to all proliferating cells in the body. This protein may also have a physiologic role as granulocyte/pollen-binding protein (GPBP) involved in the removal of certain organic matter and allergens from serum.

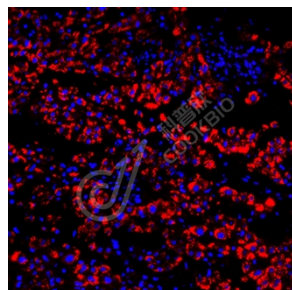
储存条件

储存条件: 自收到之日起 -20°C下储存一年, 避免反复冻融。
储存缓冲液: 含 0.15% ProClin300 防腐剂, 100 µg/mL 牛血清白蛋白和 50%甘油的磷酸盐缓冲液。

图像



IHC 检测 Transferrin 蛋白(货号 K1333936).
 样品: 小鼠纤维化肝脏, 4%多聚甲醛 (货号 KSG1101) 固定 12-24 小时.
 抗原修复: 柠檬酸抗原修复液(干粉, pH 6.0) (KSG1201), 98°C, 20 分钟.
 一抗: 1: 3000 稀释, 4°C 孵育过夜.
 二抗: S-vision 免疫组化多聚二抗(山羊抗兔), 即用型 (货号 KB3906), 室温孵育 20 分钟.



IF 检测 Transferrin 蛋白(货号 K1333936)(红色).
 样品: 人肝癌, 4%多聚甲醛 (货号 KSG1101) 固定 12-24 小时.
 抗原修复: Tris-EDTA 抗原修复液(pH 9.0) (KSG1203), 98°C, 20 分钟.
 封闭: 3% BSA (货号 KSGC305010) 的 PBS 溶液, 室温孵育 30 分钟.
 一抗: 1: 3000 稀释, 4°C 孵育过夜.
 二抗: Cy3 标记山羊抗兔 IgG (H+L) (货号 KB63909), 1: 300 稀释, 室温孵育 1 小时.

For Research Use Only!
Ver. No.: V1-202603