

Anti-Exonuclease 1 兔多克隆抗体

K1334197 -20°C



产品信息

| | |
|------------|--|
| 蛋白质全称 | 核酸外切酶 1 |
| 别名 | mExo1, Exonuclease 1, Exo1, HEX1, hExo1, rad2 nuclease family member, Homolog of S, cerevisiae exonuclease 1 |
| 免疫原 | 小鼠 Exonuclease 1 重组蛋白 |
| Uniprot ID | Q9QZ11 |
| 抗体亚型 | IgG |
| 纯化方式 | 亲和纯化 |
| 亚细胞定位 | 细胞核 |

应用

IHC/IF 免疫组织化学/免疫荧光

物种: 大鼠

稀释比: 1: 900-1: 1800

阳性样品: 脑, 睾丸

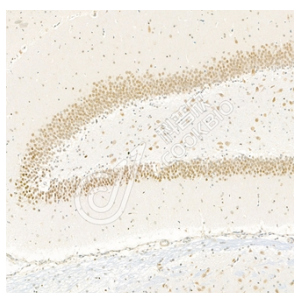
背景

EXO1 also named as HEX1, is a protein with 5' to 3' exonuclease activity as well as an RNase H activity, which belongs to the XPG/RAD2 endonuclease family. EXO1 as 5'→3' double-stranded DNA exonuclease, which may also possess a cryptic 3'→5' double-stranded DNA exonuclease activity. EXO1 functions in DNA mismatch repair (MMR) to excise mismatch-containing DNA tracts directed by strand breaks located either 5' or 3' to the mismatch.

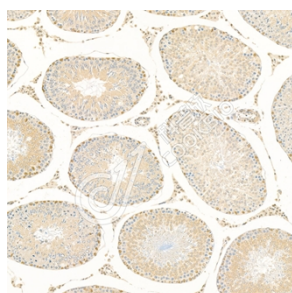
储存条件

储存条件: 自收到之日起 -20°C下储存一年, 避免反复冻融。
储存缓冲液: 含 0.15% ProClin300 防腐剂, 100 μg/mL 牛血清白蛋白和 50%甘油的磷酸盐缓冲液。

图像



IHC 检测 Exonuclease 1 蛋白(货号 K1334197).
 样品: 大鼠脑, 4%多聚甲醛 (货号 KSG1101) 固定 12-24 小时.
 抗原修复: Tris-EDTA 抗原修复液(pH 9.0) (KSG1203), 98°C, 20 分钟.
 一抗: 1: 1400 稀释, 4°C 孵育过夜.
 二抗: S-vision 免疫组化多聚二抗(山羊抗兔), 即用型 (货号 KB3906), 室温孵育 20 分钟.



IHC 检测 Exonuclease 1 蛋白(货号 K1334197).
 样品: 大鼠睾丸, 4%多聚甲醛 (货号 KSG1101) 固定 12-24 小时.
 抗原修复: Tris-EDTA 抗原修复液(pH 9.0) (KSG1203), 98°C, 20 分钟.
 一抗: 1: 1400 稀释, 4°C 孵育过夜.
 二抗: S-vision 免疫组化多聚二抗(山羊抗兔), 即用型 (货号 KB3906), 室温孵育 20 分钟.

For Research Use Only!

Ver. No.: V1-202603