

Anti-Apolipoprotein A I 兔多克隆抗体

K1334068 -20°C



产品信息

| | |
|------------|---|
| 蛋白质全称 | 载脂蛋白 A-I |
| 别名 | Apo-AI, ApoA-I, Apolipoprotein A1, APOA1, Truncated apolipoprotein A-I, AIBP, Proapolipoprotein A-I, Apolipoprotein A I binding protein, ProapoA-I, APOA1, Lvtw1, Brp14, Sep1 |
| 免疫原 | 小鼠 Apolipoprotein A I 重组蛋白 |
| Uniprot ID | Q00623 |
| 抗体亚型 | IgG |
| 纯化方式 | 亲和纯化 |
| 亚细胞定位 | 分泌型 |

应用

IHC/IF 免疫组织化学/免疫荧光

物种: 小鼠, 大鼠

稀释比: 1: 1900-1: 3800

阳性样品: 肝, 小肠

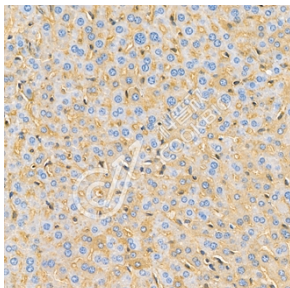
背景

ApoA1 is a major protein component of high density lipoproteins (HDL) which is associated with reversed cholesterol transport, lipid/cholesterol binding, lecithin/cholesterol acyltransferase (LCAT) activation and specific receptors binding. ApoA1 promotes cholesterol efflux from tissues to the liver for excretion, and it is a cofactor for lecithin cholesterolacyltransferase (LCAT) which is responsible for the formation of most plasma cholesteryl esters. Defects of ApoA1 cause low HDL level and systemic non-neuropathic amyloidosis. Serum concentration of ApoA1 is inversely related to the risk of developing atherosclerosis.

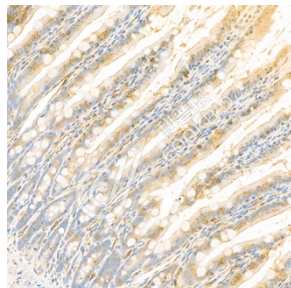
储存条件

储存条件: 自收到之日起 -20°C下储存一年, 避免反复冻融。
储存缓冲液: 含 0.15% ProClin300 防腐剂, 100 µg/mL 牛血清白蛋白和 50%甘油的磷酸盐缓冲液。

图像



IHC 检测 Apolipoprotein A I 蛋白(货号 K1334068).
 样品: 小鼠肝, 4%多聚甲醛 (货号 KSG1101) 固定 12-24 小时.
 抗原修复: 柠檬酸抗原修复液(干粉, pH 6.0) (KSG1201), 98°C, 20 分钟.
 一抗: 1: 2900 稀释, 4°C 孵育过夜.
 二抗: S-vision 免疫组化多聚二抗(山羊抗兔),即用型 (货号 KB3906), 室温孵育 20 分钟.



IHC 检测 Apolipoprotein A I 蛋白(货号 K1334068).
 样品: 大鼠小肠, 4%多聚甲醛 (货号 KSG1101) 固定 12-24 小时.
 抗原修复: 柠檬酸抗原修复液(干粉, pH 6.0) (KSG1201), 98°C, 20 分钟.
 一抗: 1: 2900 稀释, 4°C 孵育过夜.
 二抗: S-vision 免疫组化多聚二抗(山羊抗兔),即用型 (货号 KB3906), 室温孵育 20 分钟.

For Research Use Only!

Ver. No.: V1-202603