

Anti-LC3A/B 兔多克隆抗体

K133372 -20°C


产品信息

蛋白质全称	微管关联蛋白 1A/1B 轻链 3
别名	LC3, LC3A, LC3A/B, LC3B, MAP1A/MAP1B LC3 A, MAP1A/MAP1B light chain 3 A, MAP1ALC3, MAP1BLC3, MAP1LC3A, MAP1LC3A/B, MAP1LC3B
免疫原	KLH 偶联的小鼠 LC3B 合成肽
Uniprot ID	Q9CQV6
抗体亚型	IgG
纯化方式	亲和纯化
亚细胞定位	胞质, 自噬体膜
预测分子量 / 观测分子量	14/16 kDa / 14/16 kDa

应用

WB 免疫印迹

物种: 人, 小鼠, 大鼠
 稀释比: 1: 1000-1: 2000
 阳性样品: 海马区

ICC/IF 免疫细胞化学/免疫荧光

物种: 人, 小鼠, 大鼠
 稀释比: 1: 300-1: 600
 阳性样品:

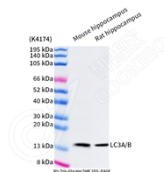
背景

LC3, also known as microtubule-associated protein 1 light chain 3 (MAP1LC3), is a mammalian homolog of the yeast Atg8p (autophagy-related 8 protein) that is involved in autophagy process. Three isoforms of LC3 exist as LC3A, LC3B, and LC3C. LC3 is first synthesized as pro-LC3, and undergoes C-terminal cleavage to yield a cytosolic precursor known as LC3-I. During autophagy LC3-I is subsequently conjugated to PE lipid as lipidated form: LC3-II. The lipidated form migrates faster on SDS-PAGE gel. The increased level of LC3-II has been widely used as autophagy marker. This antibody recognizes both LC3-I and LC3-II.

储存条件

储存条件: 自收到之日起 -20°C 下储存一年, 避免反复冻融。
储存缓冲液: 含 0.15% ProClin300 防腐剂, 100 μg/mL 牛血清白蛋白和 50% 甘油的磷酸盐缓冲液。

图像



WB 检测 LC3A/B 蛋白(货号 K133372).
 样品: 经 RIPA 裂解液(货号 KSG2002)处理的蛋白质.
 封闭: 3% 脱脂牛奶(货号 KSGC310001)溶于 TBST 溶液,
 室温孵育 1 小时.
 一抗: 1: 1000 稀释, 4°C 孵育过夜.
 二抗: HRP 标记山羊抗兔 IgG (H+L) (货号 KB69909), 1:
 5000 稀释, 室温孵育 1 小时.

For Research Use Only!
Ver. No.: V1-202603