

Anti-WTAP 兔多克隆抗体

K1334593 -20°C



产品信息

蛋白质全称	前 mRNA 剪接调节因子 WTAP
别名	Female-lethal(2)D homolog, hFL(2)D, WT1-associated protein, Wilms tumor 1-associating protein, WTAP, KIAA0105
免疫原	小鼠 WTAP 重组蛋白
Uniprot ID	Q9ER69
抗体亚型	IgG
纯化方式	亲和纯化
预测分子量 / 观测分子量	44 kDa / 55 kDa

应用

WB 免疫印迹

物种：人
 稀释比：1: 500-1: 1000
 阳性样品：HeLa 细胞

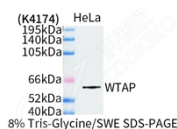
背景

WTAP, also named as KIAA0105 and hFL(2)D, is previously identified as a protein associated with Wilms' tumor-1 (WT-1) protein that is essential for the development of the genitourinary system. It is a Pre-mRNA-splicing regulator protein. It is a regulatory subunit of the WMM N6-methyltransferase complex which plays a role in the efficiency of mRNA splicing and processing and mRNA stability. It is required for accumulation of METTL3 and METTL14 to nuclear speckle.

储存条件

储存条件：自收到之日起 -20°C 下储存一年，避免反复冻融。
储存缓冲液：含 0.15% ProClin300 防腐剂, 100 μg/mL 牛血清白蛋白和 50% 甘油的磷酸盐缓冲液。

图像



WB 检测 WTAP 蛋白(货号 K1334593).
 样品：经 RIPA 裂解液(货号 KSG2002)处理的蛋白质。
 封闭：3%脱脂牛奶(货号 KSGC310001)溶于 TBST 溶液，
 室温孵育 1 小时。
 一抗：1: 1000 稀释，4°C 孵育过夜。
 二抗：HRP 标记山羊抗兔 IgG (H+L) (货号 KB69909), 1: 5000 稀释，室温孵育 1 小时。

For Research Use Only!

Ver. No.: V1-202603