

Anti-eIF3L 兔多克隆抗体

K1334602 -20°C



产品信息

蛋白质全称	真核翻译起始因子 3 亚基 L
别名	eIF3L, Eukaryotic translation initiation factor 3 subunit 6-interacting protein, EIF3L, EIF3EIP, HSPC021, HSPC025, MSTP005
免疫原	小鼠 eIF3L 重组蛋白
Uniprot ID	Q8QZY1
抗体亚型	IgG
纯化方式	亲和纯化
预测分子量 / 观测分子量	67 kDa / 67 kDa

应用

WB 免疫印迹

物种：人
 稀释比：1: 500-1: 1000
 阳性样品：293 细胞

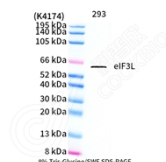
背景

The eIF3L is a component of the eukaryotic translation initiation factor 3 (eIF-3) complex, which is required for several steps in the initiation of protein synthesis. The eukaryotic initiation factor-3 (eIF3) scaffolding structure function to control the assembly of the 40S ribosomal subunit. Association of eIF3 proteins with the 40S ribosomal subunit stabilizes eIF2-GTP-Met-tRNA^{Met} complex association and mRNA binding, and promotes dissociation of 80S ribosomes into 40S and 60S subunits, thereby promoting the assembly of the pre-initiation complex.

储存条件

储存条件：自收到之日起 -20°C 下储存一年，避免反复冻融。
储存缓冲液：含 0.15% ProClin300 防腐剂, 100 μg/mL 牛血清白蛋白和 50% 甘油的磷酸盐缓冲液。

图像



WB 检测 eIF3L 蛋白(货号 K1334602).
 样品: 经 RIPA 裂解液(货号 KSG2002)处理的蛋白质.
 封闭: 3% 脱脂牛奶(货号 KSGC310001)溶于 TBST 溶液,
 室温孵育 1 小时.
 一抗: 1: 1000 稀释, 4°C 孵育过夜.
 二抗: HRP 标记山羊抗兔 IgG (H+L) (货号 KB69909), 1:
 5000 稀释, 室温孵育 1 小时.

For Research Use Only!

Ver. No.: V1-202603