

Anti-HDGF 小鼠单克隆抗体

K238616 -20°C



产品信息

蛋白质全称	肝癌衍生生长因子
别名	HDGF, Hepatoma derived growth factor; Hepatoma-derived growth factor, High mobility group protein 1 like 2, High mobility group protein 1-like 2, HMG-1L2, HMG1L2
免疫原	小鼠 HDGF 重组蛋白
Uniprot ID	P51859
抗体亚型	IgG2a, κ
克隆号	1D5B6
纯化方式	亲和纯化
预测分子量 / 观测分子量	37 kDa / 37 kDa

应用

WB 免疫印迹

物种：人, 小鼠

稀释比：1: 500-1: 1000

阳性样品：HeLa 细胞, 293 细胞

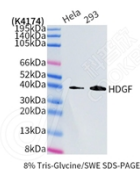
背景

This gene encodes a member of the hepatoma-derived growth factor family. The encoded protein has mitogenic and DNA-binding activity and may play a role in cellular proliferation and differentiation. This gene was thought initially to be located on chromosome X, however, that location has been determined to correspond to a related pseudogene. Alternatively spliced transcript variants encoding distinct isoforms have been described.

储存条件

储存条件：自收到之日起 -20°C 下储存一年，避免反复冻融。
储存缓冲液：含 0.15% ProClin300 防腐剂, 100 μg/mL 牛血清白蛋白和 50% 甘油的磷酸盐缓冲液。

图像



WB 检测 HDGF 蛋白(货号 K238616).
 样品: 经 RIPA 裂解液(货号 KSG2002)处理的蛋白质.
 封闭: 3% 脱脂牛奶(货号 KSGC310001)溶于 TBST 溶液, 室温孵育 1 小时.
 一抗: 1: 1000 稀释, 4°C 孵育过夜.
 二抗: HRP 标记山羊抗小鼠 IgG (H+L) (货号 KB69903), 1: 5000 稀释, 室温孵育 1 小时.

For Research Use Only!

Ver. No.: V1-202603