

# Anti-CDK6 兔多克隆抗体

K1334818 -20°C



## 产品信息

蛋白质全称	细胞周期蛋白依赖性激酶 6
别名	Serine/threonine-protein kinase PLSTIRE, CDK6, CDKN6, MCPH12, MGC59692, PLSTIRE, STQTL11, Crk2, Cell division protein kinase 6
免疫原	KLH 偶联的人 CDK6 合成肽
Uniprot ID	Q00534
抗体亚型	IgG
纯化方式	亲和纯化
预测分子量 / 观测分子量	37 kDa / 37 kDa

## 应用

### WB 免疫印迹

物种：人  
 稀释比：1: 500-1: 1000  
 阳性样品：Jurkat 细胞

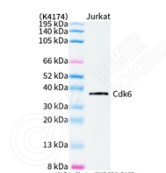
## 背景

Cyclin-dependent kinase 6 (p40cdk6 also known as PLSTIRE) belongs to a family of proteins designated as cdk. They are critical regulators of cell cycle progression. The prototype member of this family, p34cdc2, and a related protein cdk2, function late in the cycle while cdk4 and cdk6 are critically involved in G1 to S progression. CDK6 is essential for cell proliferation within the dentate gyrus of the hippocampus and the cuventricular zone of the lateral ventricles. Mutations in the gene results in microcephaly 12, primary, autosomal recessive (MCPH12).

## 储存条件

**储存条件：**自收到之日起 -20°C下储存一年，避免反复冻融。  
**储存缓冲液：**含 0.15% ProClin300 防腐剂, 100 μg/mL 牛血清白蛋白和 50%甘油的磷酸盐缓冲液。

## 图像



WB 检测 CDK6 蛋白(货号 K1334818).  
 样品: 经 RIPA 裂解液(货号 KSG2002)处理的蛋白质.  
 封闭: 3%脱脂牛奶(货号 KSGC310001)溶于 TBST 溶液,  
 室温孵育 1 小时.  
 一抗: 1: 1000 稀释, 4°C 孵育过夜.  
 二抗: HRP 标记山羊抗兔 IgG (H+L) (货号 KB69909), 1:  
 5000 稀释, 室温孵育 1 小时.

For Research Use Only!

Ver. No.: V1-202603