

Anti-GDF6 兔多克隆抗体

K1334962 -20°C



产品信息

蛋白质全称	生长/分化因子 6
别名	GDF-6, Bone morphogenetic protein 13, BMP-13, Growth/differentiation factor 16, Gdf16, MCOPCB6, MCOP4, LCA17
免疫原	小鼠 GDF6 重组蛋白
Uniprot ID	P43028
抗体亚型	IgG
纯化方式	亲和纯化
亚细胞定位	分泌型

应用

IHC/IF 免疫组织化学/免疫荧光

物种：小鼠，大鼠

稀释比：1: 500-1: 1000

阳性样品：脑

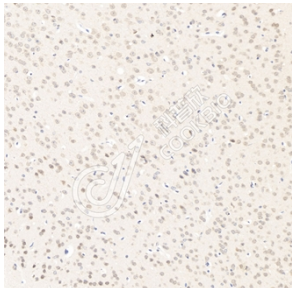
背景

GDF6 is a growth differentiation factor (GDFs), which are members of the transforming growth factor (TGF) superfamily that is involved in embryonic development and adult tissue homeostasis. Both GDF6 and GDF7 are closely related to GDF5 which has been shown to induce activation of plasminogen activator, thereby inducing angiogenesis. It is predominantly expressed in long bones during fetal embryonic development and is involved in bone formation. In *Xenopus*, GDF6 is expressed at the edge of the neural plate and within the anterior neural plate including the eye fields.

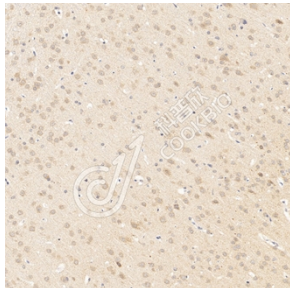
储存条件

储存条件：自收到之日起 -20°C 下储存一年，避免反复冻融。
储存缓冲液：含 0.15% ProClin300 防腐剂, 100 µg/mL 牛血清白蛋白和 50% 甘油的磷酸盐缓冲液。

图像



IHC 检测 GDF6 蛋白(货号 K1334962).
 样品：小鼠脑, 4%多聚甲醛(货号 KSG1101) 固定 12-24 小时.
 抗原修复：柠檬酸抗原修复液(干粉, pH 6.0) (KSG1201), 98°C, 20 分钟.
 一抗：1: 800 稀释, 4°C 孵育过夜.
 二抗：S-vision 免疫组化多聚二抗(山羊抗兔), 即用型(货号 KB3906), 室温孵育 20 分钟.



IHC 检测 GDF6 蛋白(货号 K1334962).
 样品：大鼠脑, 4%多聚甲醛(货号 KSG1101) 固定 12-24 小时.
 抗原修复：柠檬酸抗原修复液(干粉, pH 6.0) (KSG1201), 98°C, 20 分钟.
 一抗：1: 800 稀释, 4°C 孵育过夜.
 二抗：S-vision 免疫组化多聚二抗(山羊抗兔), 即用型(货号 KB3906), 室温孵育 20 分钟.

For Research Use Only!

Ver. No.: V1-202603