

# Anti-PRKX 兔多克隆抗体

K1335124 -20°C



## 产品信息

蛋白质全称	cAMP 依赖性蛋白激酶催化亚基 PRKX
别名	PrKX, Protein kinase X, Protein kinase X-linked, Serine/threonine-protein kinase PRKX, PKA-related protein kinase, Pkare
免疫原	小鼠 PRKX 重组蛋白
Uniprot ID	Q922R0
抗体亚型	IgG
纯化方式	亲和纯化
预测分子量 / 观测分子量	40 kDa / 41 kDa

## 应用

### WB 免疫印迹

物种：小鼠，大鼠

稀释比：1: 500-1: 1000

阳性样品：肺

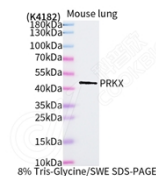
## 背景

This gene encodes a serine threonine protein kinase that has similarity to the catalytic subunit of cyclic AMP dependent protein kinases. The encoded protein is developmentally regulated and may be involved in renal epithelial morphogenesis. This protein may also be involved in macrophage and granulocyte maturation. Abnormal recombination between this gene and a related pseudogene on chromosome Y is a frequent cause of sex reversal disorder in XX males and XY females. Pseudogenes of this gene are found on chromosomes X, 15 and Y.

## 储存条件

**储存条件：**自收到之日起 -20°C下储存一年，避免反复冻融。  
**储存缓冲液：**含 0.15% ProClin300 防腐剂, 100 µg/mL 牛血清白蛋白和 50%甘油的磷酸盐缓冲液。

## 图像



WB 检测 PRKX 蛋白(货号 K1335124).  
 样品: 经 RIPA 裂解液(货号 KSG2002)处理的蛋白质.  
 封闭: 3%脱脂牛奶(货号 KSGC310001)溶于 TBST 溶液,  
 室温孵育 1 小时.  
 一抗: 1: 1000 稀释, 4°C 孵育过夜.  
 二抗: HRP 标记山羊抗兔 IgG (H+L) (货号 KB69909), 1:  
 5000 稀释, 室温孵育 1 小时.

For Research Use Only!

Ver. No.: V1-202603