

Anti-OPA1 兔多克隆抗体

K1335184 -20°C



产品信息

蛋白质全称	Dynamin 样 120kDa 蛋白
别名	Large GTP-binding protein, LargeG, Optic atrophy protein 1 homolog, Opa1, Juvenile kjer type optic atrophy, MGM1, NPG
免疫原	KLH 偶联的小鼠 OPA1 合成肽
Uniprot ID	P58281
抗体亚型	IgG
纯化方式	亲和纯化
预测分子量 / 观测分子量	111 kDa / 90 kDa

应用

WB 免疫印迹

物种: 人, 小鼠, 大鼠

稀释比: 1: 500-1: 1000

阳性样品: 肾

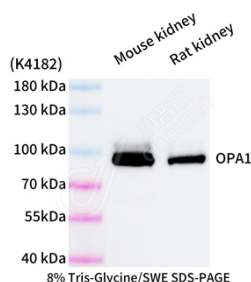
背景

OPA1 is a nuclear-encoded mitochondrial protein with similarity to dynamin-related GTPases. OPA1 localizes to the inner mitochondrial membrane and helps regulate mitochondrial stability and energy output. This protein also sequesters cytochrome c. OPA1 is associated with the inner membrane and protects cells from apoptosis by regulating inner membrane dynamics. Mutation of OPA1 causes the disease dominant optic atrophy, a degeneration of the retinal ganglion cells.

储存条件

储存条件: 自收到之日起 -20°C下储存一年, 避免反复冻融。
储存缓冲液: 含 0.15% ProClin300 防腐剂, 100 µg/mL 牛血清白蛋白和 50%甘油的磷酸盐缓冲液。

图像



WB 检测 OPA1 蛋白(货号 K1335184).
 样品: 经 RIPA 裂解液(货号 KSG2002)处理的蛋白质.
 封闭: 3%脱脂牛奶(货号 KSGC310001)溶于 TBST 溶液,
 室温孵育 1 小时.
 一抗: 1: 1000 稀释, 4°C 孵育过夜.
 二抗: HRP 标记山羊抗兔 IgG (H+L) (货号 KB69909), 1:
 5000 稀释, 室温孵育 1 小时.

For Research Use Only!

Ver. No.: V1-202603