

Anti-Legumain 兔多克隆抗体

K1335340 -20°C



产品信息

蛋白质全称	Legumain 冬酰胺内肽酶
别名	Asparaginyl endopeptidase, Protease, cysteine 1, Lgmn, Prsc1, AEP, Cysteine protease 1
免疫原	小鼠 Legumain 重组蛋白
Uniprot ID	O89017
抗体亚型	IgG
纯化方式	亲和纯化
亚细胞定位	溶酶体

应用

IHC/IF 免疫组织化学/免疫荧光

物种: 小鼠, 大鼠

稀释比: 1: 100-1: 600

阳性样品: 肾

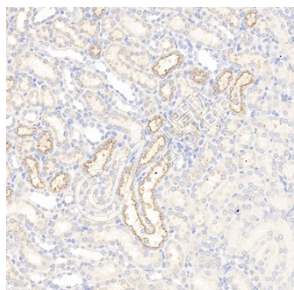
背景

LGMN (Legumain), also known as asparaginyl endopeptidase or AEP, is a broadly expressed lysosomal cysteine endopeptidase that belongs to peptidase family C13 and specifically hydrolyzes substrate asparaginyl bonds. LGMN directly regulates diverse physiological and pathological processes by remodeling tissue-specific targets. In addition, LGMN indirectly contributes to atherosclerotic plaque instability through activation of cathepsin L in the arterial ECM. LGMN is secreted as inactive prolegumain (56 kDa) and processed into enzymatically active 46 and 36 kDa forms, as well as a 17 kDa enzymatically inactive C-terminal fragment.

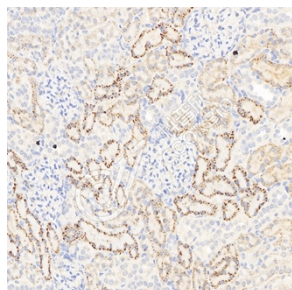
储存条件

储存条件: 自收到之日起 -20°C下储存一年, 避免反复冻融。
储存缓冲液: 含 0.15% ProClin300 防腐剂, 100 µg/mL 牛血清白蛋白和 50%甘油的磷酸盐缓冲液。

图像



IHC 检测 Legumain 蛋白(货号 K1335340).
 样品: 小鼠肾, 4%多聚甲醛(货号 KSG1101) 固定 12-24 小时.
 抗原修复: 柠檬酸抗原修复液(干粉, pH 6.0) (KSG1201), 98°C, 20 分钟.
 一抗: 1: 400 稀释, 4°C 孵育过夜.
 二抗: S-vision 免疫组化多聚二抗(山羊抗兔), 即用型 (货号 KB3906), 室温孵育 20 分钟.



IHC 检测 Legumain 蛋白(货号 K1335340).
 样品: 大鼠肾, 4%多聚甲醛(货号 KSG1101) 固定 12-24 小时.
 抗原修复: 柠檬酸抗原修复液(干粉, pH 6.0) (KSG1201), 98°C, 20 分钟.
 一抗: 1: 400 稀释, 4°C 孵育过夜.
 二抗: S-vision 免疫组化多聚二抗(山羊抗兔), 即用型 (货号 KB3906), 室温孵育 20 分钟.

For Research Use Only!

Ver. No.: V1-202603