

# Anti-CLCA1 兔多克隆抗体

K1336945 -20°C



## 产品信息

蛋白质全称	钙激活氯离子通道调节因子 1
别名	Calcium-activated chloride channel family member 3, mCLCA3, Protein gob-5, Clca3, Gob5, Clca1
免疫原	小鼠 CLCA1 重组蛋白
Uniprot ID	Q9D7Z6
抗体亚型	IgG
纯化方式	亲和纯化
亚细胞定位	分泌型

## 应用

### IHC/IF 免疫组织化学/免疫荧光

物种：小鼠，大鼠

稀释比：1: 700-1: 1400

阳性样品：结肠

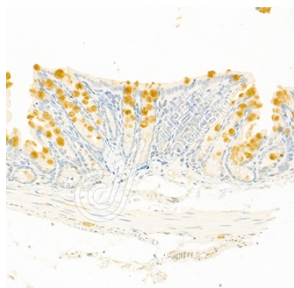
## 背景

This gene encodes a member of the calcium sensitive chloride conductance protein family. To date, all members of this gene family map to the same region on chromosome 1p31-p22 and share a high degree of homology in size, sequence, and predicted structure, but differ significantly in their tissue distributions. The encoded protein is expressed as a precursor protein that is processed into two cell-surface-associated subunits, although the site at which the precursor is cleaved has not been precisely determined. The encoded protein may be involved in mediating calcium-activated chloride conductance in the intestine.

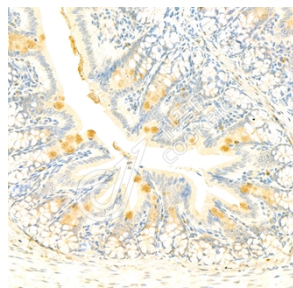
## 储存条件

**储存条件：**自收到之日起 -20°C下储存一年，避免反复冻融。  
**储存缓冲液：**含 0.15% ProClin300 防腐剂, 100 µg/mL 牛血清白蛋白和 50%甘油的磷酸盐缓冲液。

## 图像



IHC 检测 CLCA1 蛋白(货号 K1336945).  
 样品: 小鼠结肠, 4%多聚甲醛 (货号 KSG1101) 固定 12-24 小时.  
 抗原修复: 柠檬酸抗原修复液(干粉, pH 6.0) (KSG1201), 98°C, 20 分钟.  
 一抗: 1: 1100 稀释, 4°C 孵育过夜.  
 二抗: S-vision 免疫组化多聚二抗(山羊抗兔),即用型 (货号 KB3906), 室温孵育 20 分钟.



IHC 检测 CLCA1 蛋白(货号 K1336945).  
 样品: 大鼠结肠, 4%多聚甲醛 (货号 KSG1101) 固定 12-24 小时.  
 抗原修复: 柠檬酸抗原修复液(干粉, pH 6.0) (KSG1201), 98°C, 20 分钟.  
 一抗: 1: 1100 稀释, 4°C 孵育过夜.  
 二抗: S-vision 免疫组化多聚二抗(山羊抗兔),即用型 (货号 KB3906), 室温孵育 20 分钟.

For Research Use Only!

Ver. No.: V1-202603