

# Anti-NME2 兔多克隆抗体

**K1337557** -20°C


## 产品信息

蛋白质全称	核苷二磷酸激酶 B
别名	NDK B, NDP kinase B, Histidine protein kinase NDKB, P18, nm23-M2, Nme2
免疫原	人 NME2 重组蛋白
Uniprot ID	P22392
抗体亚型	IgG
纯化方式	亲和纯化
预测分子量 / 观测分子量	17 kDa / 17 kDa

## 应用

### WB 免疫印迹

物种：人, 小鼠, 大鼠

稀释比：1: 250-1: 500

阳性样品：A549 细胞, HT-29 细胞

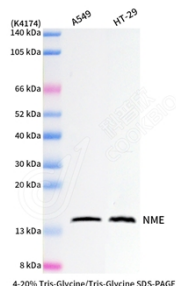
## 背景

NME2 is identical to the beta subunit of human erythrocyte NDP kinase. NDP kinases are involved in the synthesis of nucleoside triphosphates, and NM23 may act in the regulation of signal transduction by complexing with G proteins, causing activation/inactivation of developmental pathways. NEM2 has been identified as a putative tumor suppressor. High expression of mouse NME2 is detected in heart, liver, and kidney, with moderate expression in skeletal muscle, and negligible expression in other mouse tissues examined.

## 储存条件

**储存条件：**自收到之日起 -20°C下储存一年，避免反复冻融。  
**储存缓冲液：**含 0.15% ProClin300 防腐剂, 100 μg/mL 牛血清白蛋白和 50%甘油的磷酸盐缓冲液。

## 图像



WB 检测 NME2 蛋白(货号 K1337557).  
 样品: 经 RIPA 裂解液(货号 KSG2002)处理的蛋白质.  
 封闭: 3%脱脂牛奶(货号 KSGC310001)溶于 TBST 溶液,  
 室温孵育 1 小时.  
 一抗: 1: 500 稀释, 4°C 孵育过夜.  
 二抗: HRP 标记山羊抗兔 IgG (H+L) (货号 KB69909), 1:  
 5000 稀释, 室温孵育 1 小时.

**For Research Use Only!**
**Ver. No.: V1-202603**