

# Anti-WDR33 兔多克隆抗体

**K1338283** -20°C



## 产品信息

蛋白质全称	pre-mRNA 3'末端处理蛋白 WDR33
别名	WD repeat-containing protein 33, WD repeat-containing protein of 146 kDa, Wdr33, Wdc146, NET14
免疫原	小鼠 WDR33 重组蛋白
Uniprot ID	Q8K4P0
抗体亚型	IgG
纯化方式	亲和纯化
亚细胞定位	细胞核

## 应用

### IHC/IF 免疫组织化学/免疫荧光

物种：小鼠，大鼠

稀释比：1: 1200-1: 2400

阳性样品：睾丸

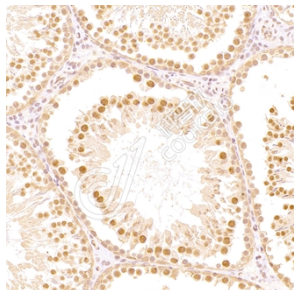
## 背景

WD repeat domain 33 (WDR33), also named WDC146, is a member of the WD repeat protein family. WD repeats are minimally conserved regions of approximately 40 amino acids typically bracketed by gly-his and trp-asp (GH-WD), which may facilitate formation of heterotrimeric or multiprotein complexes. Members of this family are involved in a variety of cellular processes, including cell cycle progression, signal transduction, apoptosis, and gene regulation. This gene is highly expressed in testis and the protein is localized to the nucleus. This gene may play important roles in the mechanisms of cytodifferentiation and/or DNA recombination.

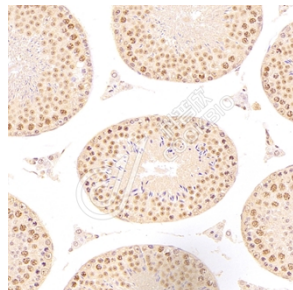
## 储存条件

**储存条件：**自收到之日起 -20°C下储存一年，避免反复冻融。  
**储存缓冲液：**含 0.15% ProClin300 防腐剂, 100 µg/mL 牛血清白蛋白和 50%甘油的磷酸盐缓冲液。

## 图像



IHC 检测 WDR33 蛋白(货号 K1338283).  
 样品: 小鼠睾丸, 4%多聚甲醛 (货号 KSG1101) 固定 12-24 小时.  
 抗原修复: Tris-EDTA 抗原修复液(pH 9.0) (KSG1203), 98°C, 20 分钟.  
 一抗: 1: 1800 稀释, 4°C 孵育过夜.  
 二抗: S-vision 免疫组化多聚二抗(山羊抗兔),即用型 (货号 KB3906), 室温孵育 20 分钟.



IHC 检测 WDR33 蛋白(货号 K1338283).  
 样品: 大鼠睾丸, 4%多聚甲醛 (货号 KSG1101) 固定 12-24 小时.  
 抗原修复: Tris-EDTA 抗原修复液(pH 9.0) (KSG1203), 98°C, 20 分钟.  
 一抗: 1: 1800 稀释, 4°C 孵育过夜.  
 二抗: S-vision 免疫组化多聚二抗(山羊抗兔),即用型 (货号 KB3906), 室温孵育 20 分钟.

**For Research Use Only!**

**Ver. No.: V1-202603**