

Anti-Kallikrein 7/KLK7 兔多克隆抗体

K1338961 -20°C



产品信息

蛋白质全称	激肽释放酶 7
别名	Serine protease 6, Stratum corneum chymotryptic enzyme, Thymopsin, Klk7, Prss6, Scce
免疫原	KLH 偶联的小鼠 Kallikrein 7/KLK7 合成肽
Uniprot ID	Q91VE3
抗体亚型	IgG
纯化方式	亲和纯化
亚细胞定位	分泌型
预测分子量 / 观测分子量	27 kDa / 27 kDa

应用

WB 免疫印迹

物种: 小鼠, 大鼠
 稀释比: 1: 500-1: 1000
 阳性样品:

IHC/IF 免疫组织化学/免疫荧光

物种: 小鼠
 稀释比: 1: 800-1: 1600
 阳性样品: 皮肤

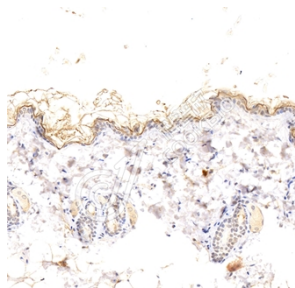
背景

Kallikreins are a subgroup of serine proteases having diverse physiological functions. Growing evidence suggests that many kallikreins are implicated in carcinogenesis and some have potential as novel cancer and other disease biomarkers. This gene is one of the fifteen kallikrein subfamily members located in a cluster on chromosome 19. Its encoded enzyme is thought to be involved in the proteolysis of intercellular cohesive structures preceding desquamation, which is the shedding of the outermost layer of the epidermis. Alternative splicing of this gene results in two transcript variants encoding the same protein.

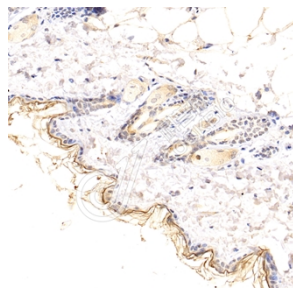
储存条件

储存条件: 自收到之日起 -20°C下储存一年, 避免反复冻融。
储存缓冲液: 含 0.15% ProClin300 防腐剂, 100 µg/mL 牛血清白蛋白和 50%甘油的磷酸盐缓冲液。

图像



IHC 检测 Kallikrein 7/KLK7 蛋白(货号 K1338961).
 样品: 小鼠皮肤, 4%多聚甲醛(货号 KSG1101) 固定 12-24 小时.
 抗原修复: 柠檬酸抗原修复液(干粉, pH 6.0) (KSG1201), 98°C, 20 分钟.
 一抗: 1: 1200 稀释, 4°C 孵育过夜.
 二抗: S-vision 免疫组化多聚二抗(山羊抗兔), 即用型 (货号 KB3906), 室温孵育 20 分钟.



IHC 检测 Kallikrein 7/KLK7 蛋白(货号 K1338961).
 样品: 小鼠皮肤, 4%多聚甲醛(货号 KSG1101) 固定 12-24 小时.
 抗原修复: 柠檬酸抗原修复液(干粉, pH 6.0) (KSG1201), 98°C, 20 分钟.
 一抗: 1: 1200 稀释, 4°C 孵育过夜.
 二抗: S-vision 免疫组化多聚二抗(山羊抗兔), 即用型 (货号 KB3906), 室温孵育 20 分钟.

For Research Use Only!

Ver. No.: V1-202603