

Anti-MTM1 兔多克隆抗体

K1339198 -20°C


产品信息

蛋白质全称	Myotubularin 蛋白
别名	CG2, CNM, MTM1, MTMX, myotubularin 1, XLMTM, Myotubular myopathy 1, KIAA4176
免疫原	KLH 偶联的小鼠 MTM1 合成肽
Uniprot ID	Q9Z2C5
抗体亚型	IgG
纯化方式	亲和纯化
预测分子量 / 观测分子量	70 kDa / 70 kDa

应用

WB 免疫印迹

物种：人
 稀释比：1: 1000-1: 2000
 阳性样品：HeLa 细胞

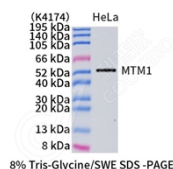
背景

The MTM1(Myotubularin) gene encodes a protein that belongs to a family of putative tyrosine phosphatases. It is required for muscle cell differentiation. The protein is also a potent phosphatidylinositol 3-phosphate (PI3P) phosphatase, which is a 66 kDa ubiquitous protein that is found mutated in the X-linked genetic disorder myotubular myopathy(XLMTM).MTM1 could therefore act as a regulator of the highly active phosphoinositide (PI) metabolism in cells, where interconversions of the eight PIs described so far is controlled by a set of specific kinases and phosphatases. MTM1 has two isoforms with the molecular mass of 66kDa and 70 kDa.

储存条件

储存条件：自收到之日起 -20°C下储存一年，避免反复冻融。
储存缓冲液：含 0.15% ProClin300 防腐剂, 100 μg/mL 牛血清白蛋白和 50%甘油的磷酸盐缓冲液。

图像



WB 检测 MTM1 蛋白(货号 K1339198).
 样品: 经 RIPA 裂解液(货号 KSG2002)处理的蛋白质.
 封闭: 3%脱脂牛奶(货号 KSGC310001)溶于 TBST 溶液,
 室温孵育 1 小时.
 一抗: 1: 1000 稀释, 4°C 孵育过夜.
 二抗: HRP 标记山羊抗兔 IgG (H+L) (货号 KB69909), 1:
 5000 稀释, 室温孵育 1 小时.

For Research Use Only!
Ver. No.: V1-202603