

Anti-RPL13A 兔多克隆抗体

K1339759 -20°C



产品信息

蛋白质全称	60S 核糖体蛋白 L13a
别名	Transplantation antigen P198, Tum-P198 antigen, Rpl13a, P198, Tstap198-7, 23 kD highly basic protein, Ribosomal protein L13a, TSTA1, L13A
免疫原	小鼠 RPL13A 重组蛋白
Uniprot ID	P19253
抗体亚型	IgG
纯化方式	亲和纯化
预测分子量 / 观测分子量	23 kDa / 23 kDa

应用

WB 免疫印迹

物种：小鼠，大鼠

稀释比：1: 300-1: 800

阳性样品：胰腺

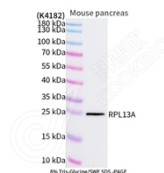
背景

This gene encodes a member of the L13P family of ribosomal proteins that is a component of the 60S subunit. The encoded protein also plays a role in the repression of inflammatory genes as a component of the IFN-gamma-activated inhibitor of translation (GAIT) complex. This gene is co-transcribed with the small nucleolar RNA genes U32, U33, U34, and U35, which are located in the second, fourth, fifth, and sixth introns, respectively.

储存条件

储存条件：自收到之日起 -20°C下储存一年，避免反复冻融。
储存缓冲液：含 0.15% ProClin300 防腐剂, 100 µg/mL 牛血清白蛋白和 50%甘油的磷酸盐缓冲液。

图像



WB 检测 RPL13A 蛋白(货号 K1339759).
 样品: 经 RIPA 裂解液(货号 KSG2002)处理的蛋白质.
 封闭: 3%脱脂牛奶(货号 KSGC310001)溶于 TBST 溶液,
 室温孵育 1 小时.
 一抗: 1: 300 稀释, 4°C 孵育过夜.
 二抗: HRP 标记山羊抗兔 IgG (H+L) (货号 KB69909), 1:
 5000 稀释, 室温孵育 1 小时.

For Research Use Only!

Ver. No.: V1-202603