

Anti-Selenium Binding Protein 1/SBP 兔多克隆抗体

K1339837 -20°C


产品信息

蛋白质全称	甲硫醇氧化酶
别名	hSBP, hSP56, LPSB, SBP, SBP56, SELENBP1, selenium binding protein 1, SP56, Selenbp2, 56 kDa selenium-binding protein
免疫原	KLH 偶联的小鼠 Selenium Binding Protein 1 / SBP 合成肽
Uniprot ID	P17563
抗体亚型	IgG
纯化方式	亲和纯化
亚细胞定位	细胞质, 细胞核
预测分子量 / 观测分子量	53 kDa / 53 kDa

应用

WB 免疫印迹

物种: 小鼠, 大鼠
 稀释比: 1: 300-1: 800
 阳性样品:

IHC/IF 免疫组织化学/免疫荧光

物种: 人
 稀释比: 1: 1200-1: 2400
 阳性样品: 结肠, 肾

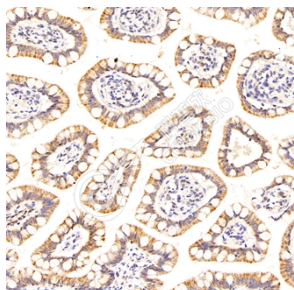
背景

SELENBP1 (selenium binding protein 1, SBP1), also known as LPSB or SP56, is a 472 amino acid peripheral membrane protein that binds selenium covalently. Selenium, an essential trace element, has been shown to have an anti-cancer effect. Many reports have described a relationship between insufficient selenium intake and increased risk of cancer. Moreover, the expression of SELENBP1 has been shown to be decreased in several tumors including cancers of the prostate, lungs, colon, and ovary. SELENBP1 has four isoforms with the molecular mass of 56kD, 52kD and 45kD.

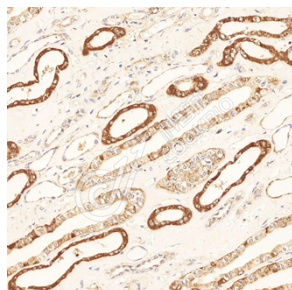
储存条件

储存条件: 自收到之日起 -20°C 下储存一年, 避免反复冻融。
储存缓冲液: 含 0.15% ProClin300 防腐剂, 100 µg/mL 牛血清白蛋白和 50% 甘油的磷酸盐缓冲液。

图像



IHC 检测 Selenium Binding Protein 1/SBP 蛋白(货号 K1339837).
 样品: 人结肠, 4%多聚甲醛 (货号 KSG1101) 固定 12-24 小时.
 抗原修复: 柠檬酸抗原修复液(干粉, pH 6.0) (KSG1201), 98°C, 20 分钟.
 一抗: 1: 1800 稀释, 4°C 孵育过夜.
 二抗: S-visualization 免疫组化多聚二抗(山羊抗兔), 即用型 (货号 KB3906), 室温孵育 20 分钟.



IHC 检测 Selenium Binding Protein 1/SBP 蛋白(货号 K1339837).
 样品: 人肾, 4%多聚甲醛 (货号 KSG1101) 固定 12-24 小时.
 抗原修复: 柠檬酸抗原修复液(干粉, pH 6.0) (KSG1201), 98°C, 20 分钟.
 一抗: 1: 1800 稀释, 4°C 孵育过夜.
 二抗: S-visualization 免疫组化多聚二抗(山羊抗兔), 即用型 (货号 KB3906), 室温孵育 20 分钟.

For Research Use Only!
Ver. No.: V1-202603