

Anti-Proteasome 20S LMP2 兔多克隆抗体

K1340101 -20°C


产品信息

蛋白质全称	蛋白酶体β9 亚基
别名	20S proteasome, beta1i, LMP2, Low molecular mass protein 2, Macropain chain 7, Proteasome chain 7, Proteasome subunit beta 1i, Proteasome subunit beta type 9, PSMB6i, PSMB9, RING12
免疫原	KLH 偶联的小鼠 Proteasome 20S LMP2 合成肽
Uniprot ID	P28076
抗体亚型	IgG
纯化方式	亲和纯化
亚细胞定位	细胞质, 细胞核

应用

IHC/IF 免疫组织化学/免疫荧光

物种: 小鼠

稀释比: 1: 300-1: 600

阳性样品: 心

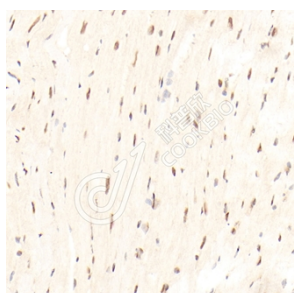
背景

PSMB9, also named as LMP2, PSMB6i and RING12, belongs to the peptidase T1B family. The proteasome is a multicatalytic proteinase complex which is characterized by its ability to cleave peptides with Arg, Phe, Tyr, Leu, and Glu adjacent to the leaving group at neutral or slightly basic pH. Replacement of PSMB6 by PSMB9 increases the capacity of the immunoproteasome to cleave model peptides after hydrophobic and basic residues. High expression of PSMB9 associated with the poor prognosis of patients with NPC.

储存条件

储存条件: 自收到之日起 -20°C下储存一年, 避免反复冻融。
储存缓冲液: 含 0.15% ProClin300 防腐剂, 100 μg/mL 牛血清白蛋白和 50%甘油的磷酸盐缓冲液。

图像



IHC 检测 Proteasome 20S LMP2 蛋白(货号 K1340101).
 样品: 小鼠心, 4%多聚甲醛 (货号 KSG1101) 固定 12-24 小时.
 抗原修复: 柠檬酸抗原修复液(干粉, pH 6.0) (KSG1201), 98°C, 20 分钟.
 一抗: 1: 500 稀释, 4°C 孵育过夜.
 二抗: S-vision 免疫组化多聚二抗(山羊抗兔),即用型 (货号 KB3906), 室温孵育 20 分钟.



IHC 检测 Proteasome 20S LMP2 蛋白(货号 K1340101).
 样品: 小鼠心, 4%多聚甲醛 (货号 KSG1101) 固定 12-24 小时.
 抗原修复: 柠檬酸抗原修复液(干粉, pH 6.0) (KSG1201), 98°C, 20 分钟.
 一抗: 1: 500 稀释, 4°C 孵育过夜.
 二抗: S-vision 免疫组化多聚二抗(山羊抗兔),即用型 (货号 KB3906), 室温孵育 20 分钟.

For Research Use Only!
Ver. No.: V1-202603