

# Anti-Nesprin3 兔多克隆抗体

**K1340326** -20°C


## 产品信息

蛋白质全称	Nesprin-3
别名	KASH domain-containing protein 3, KASH3, Nuclear envelope spectrin repeat protein 3, Syne3, C14orf49, Spectrin Repeat Containing, Nuclear Envelope Family Member 3, Nesp3, Chromosome 14 open reading frame 49, NET53
免疫原	小鼠 Nesprin3 重组蛋白
Uniprot ID	Q4FZC9
抗体亚型	IgG
纯化方式	亲和纯化
预测分子量 / 观测分子量	112 kDa / 112 kDa

## 应用

### WB 免疫印迹

物种：人，小鼠，大鼠

稀释比：1: 300-1: 800

阳性样品：睾丸，脾

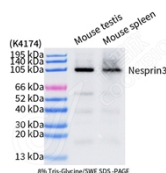
## 背景

As a component of the LINC (Linker of Nucleoskeleton and Cytoskeleton) complex involved in the connection between the nuclear lamina and the cytoskeleton. The nucleocytoplasmic interactions established by the LINC complex play an important role in the transmission of mechanical forces across the nuclear envelope and in nuclear movement and positioning. Probable anchoring protein which tethers the nucleus to the cytoskeleton by binding PLEC which can associate with the intermediate filament system.

## 储存条件

**储存条件：**自收到之日起 -20°C下储存一年，避免反复冻融。  
**储存缓冲液：**含 0.15% ProClin300 防腐剂, 100 µg/mL 牛血清白蛋白和 50%甘油的磷酸盐缓冲液。

## 图像



WB 检测 Nesprin3 蛋白(货号 K1340326).  
 样品: 经 RIPA 裂解液(货号 KSG2002)处理的蛋白质.  
 封闭: 3%脱脂牛奶(货号 KSGC310001)溶于 TBST 溶液, 室温孵育 1 小时.  
 一抗: 1: 500 稀释, 4°C 孵育过夜.  
 二抗: HRP 标记山羊抗兔 IgG (H+L) (货号 KB69909), 1: 5000 稀释, 室温孵育 1 小时.

**For Research Use Only!**
**Ver. No.: V1-202603**