

Anti-SynCAM/CADM1 兔多克隆抗体

K1340335 -20°C



产品信息

蛋白质全称	细胞粘附分子 1
别名	BL2, CADM1, IGSF4, IGSF4A, Necl-2, NECL2, Nectin like protein 2, RA175, sgIGSF, ST17, sTSLC-1, SYNCAM, synCAM1, TSLC-1, TSLC1
免疫原	小鼠 SynCAM/CADM1 重组蛋白
Uniprot ID	Q8R5M8
抗体亚型	IgG
纯化方式	亲和纯化
预测分子量 / 观测分子量	50 kDa / 50 kDa

应用

WB 免疫印迹

物种：人，小鼠，大鼠

稀释比：1: 1000-1: 2500

阳性样品：睾丸

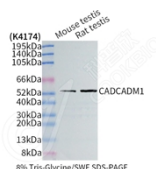
背景

CADM1 (cell adhesion molecule 1), also referred to as SgIGSF, Necl-2 or TSLC-1, is a cell adhesion molecule belonging to the immunoglobulin superfamily. It can mediate homophilic and heterophilic cell-cell adhesion. CADM1 is expressed by a variety of cells including neurons, mast cells, spermatogonia, pancreatic islet cells, epithelial cells such as lung alveolar cells and biliary epithelial cells. CADM1 is involved in carcinoma pathogenesis and the expression of CADM1 is frequently down-regulated in various tumors derived from epithelial cells. It acts as a tumor suppressor in non-small-cell lung cancer (NSCLC) cells.

储存条件

储存条件：自收到之日起 -20°C下储存一年，避免反复冻融。
储存缓冲液：含 0.15% ProClin300 防腐剂, 100 µg/mL 牛血清白蛋白和 50%甘油的磷酸盐缓冲液。

图像



WB 检测 SynCAM/CADM1 蛋白(货号 K1340335).
 样品: 经 RIPA 裂解液(货号 KSG2002)处理的蛋白质.
 封闭: 3%脱脂牛奶(货号 KSGC310001)溶于 TBST 溶液,
 室温孵育 1 小时.
 一抗: 1: 1000 稀释, 4°C 孵育过夜.
 二抗: HRP 标记山羊抗兔 IgG (H+L) (货号 KB69909), 1:
 5000 稀释, 室温孵育 1 小时.

For Research Use Only!

Ver. No.: V1-202603