

# Anti-Fibrinogen gamma chain 兔多克隆抗体

K1340386 -20°C



## 产品信息

蛋白质全称	纤维蛋白原γ链
别名	FGG, Fibrinogen gamma polypeptide, fibrinogen gamma chain
免疫原	小鼠 Fibrinogen gamma chain 重组蛋白
Uniprot ID	Q8VCM7
抗体亚型	IgG
纯化方式	亲和纯化
亚细胞定位	分泌型

## 应用

### IHC/IF 免疫组织化学/免疫荧光

物种：大鼠

稀释比：1: 200-1: 400

阳性样品：肝

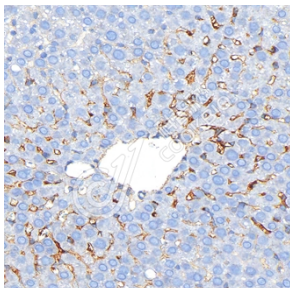
## 背景

Together with fibrinogen alpha and fibrinogen beta , polymerizes to form an insoluble fibrin matrix. Fibrin has a major function in hemostasis as one of the primary components of blood clots. In addition, functions during the early stages of wound repair to stabilize the lesion and guide cell migration during re-epithelialization. Was originally thought to be essential for platelet aggregation, based on in vitro studies using anticoagulated blood. However, subsequent studies have shown that it is not absolutely required for thrombus formation in vivo. Enhances expression of SELP in activated platelets via an ITGB3-dependent pathway. Maternal fibrinogen is essential for successful pregnancy.

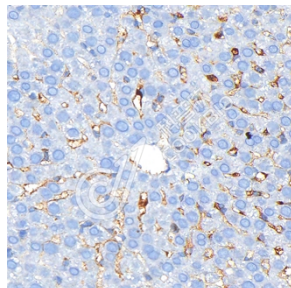
## 储存条件

**储存条件：**自收到之日起 -20°C下储存一年，避免反复冻融。  
**储存缓冲液：**含 0.15% ProClin300 防腐剂, 100 μg/mL 牛血清白蛋白和 50%甘油的磷酸盐缓冲液。

## 图像



IHC 检测 Fibrinogen gamma chain 蛋白(货号 K1340386).  
 样品：大鼠肝, 4%多聚甲醛 (货号 KSG1101) 固定 12-24 小时.  
 抗原修复：柠檬酸抗原修复液(干粉, pH 6.0) (KSG1201), 98°C, 20 分钟.  
 一抗：1: 300 稀释, 4°C 孵育过夜.  
 二抗：S-vision 免疫组化多聚二抗(山羊抗兔), 即用型 (货号 KB3906), 室温孵育 20 分钟.



IHC 检测 Fibrinogen gamma chain 蛋白(货号 K1340386).  
 样品：大鼠肝, 4%多聚甲醛 (货号 KSG1101) 固定 12-24 小时.  
 抗原修复：柠檬酸抗原修复液(干粉, pH 6.0) (KSG1201), 98°C, 20 分钟.  
 一抗：1: 300 稀释, 4°C 孵育过夜.  
 二抗：S-vision 免疫组化多聚二抗(山羊抗兔), 即用型 (货号 KB3906), 室温孵育 20 分钟.

For Research Use Only!

Ver. No.: V1-202603