

Anti-MAP3K12 兔多克隆抗体

K1340467 -20°C



产品信息

蛋白质全称	丝裂原活化蛋白激酶激酶激酶 12
别名	Dual leucine zipper bearing kinase, Leucine-zipper protein kinase, DLK, ZPK, MAPK-upstream kinase, MUK, Mixed lineage kinase, Map3k12
免疫原	小鼠 MAP3K12 重组蛋白
Uniprot ID	Q60700
抗体亚型	IgG
纯化方式	亲和纯化
亚细胞定位	细胞膜, 细胞质

应用

IHC/IF 免疫组织化学/免疫荧光

物种: 人
 稀释比: 1: 200-1: 400
 阳性样品: 肾

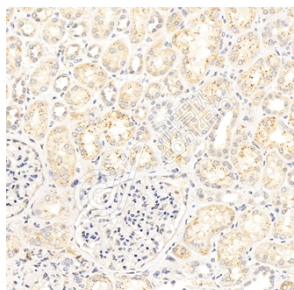
背景

This gene encodes a member of the serine/threonine protein kinase family. This kinase contains a leucine-zipper domain and is predominately expressed in neuronal cells. The phosphorylation state of this kinase in synaptic terminals was shown to be regulated by membrane depolarization via calcineurin. This kinase forms heterodimers with leucine zipper containing transcription factors, such as cAMP responsive element binding protein (CREB) and MYC, and thus may play a regulatory role in PKA or retinoic acid induced neuronal differentiation. Alternatively spliced transcript variants encoding different proteins have been described.

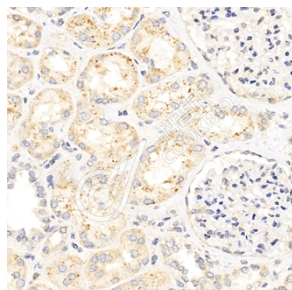
储存条件

储存条件: 自收到之日起 -20°C下储存一年, 避免反复冻融。
储存缓冲液: 含 0.15% ProClin300 防腐剂, 100 µg/mL 牛血清白蛋白和 50%甘油的磷酸盐缓冲液。

图像



IHC 检测 MAP3K12 蛋白(货号 K1340467).
 样品: 人肾, 4%多聚甲醛 (货号 KSG1101) 固定 12-24 小时.
 抗原修复: 柠檬酸抗原修复液(干粉, pH 6.0) (KSG1201), 98°C, 20 分钟.
 一抗: 1: 300 稀释, 4°C 孵育过夜.
 二抗: S-vision 免疫组化多聚二抗(山羊抗兔), 即用型 (货号 KB3906), 室温孵育 20 分钟.



IHC 检测 MAP3K12 蛋白(货号 K1340467).
 样品: 人肾, 4%多聚甲醛 (货号 KSG1101) 固定 12-24 小时.
 抗原修复: 柠檬酸抗原修复液(干粉, pH 6.0) (KSG1201), 98°C, 20 分钟.
 一抗: 1: 300 稀释, 4°C 孵育过夜.
 二抗: S-vision 免疫组化多聚二抗(山羊抗兔), 即用型 (货号 KB3906), 室温孵育 20 分钟.

For Research Use Only!

Ver. No.: V1-202603