

# Anti-COPE 兔多克隆抗体

K1340671 -20°C



## 产品信息

蛋白质全称	COPI 外壳复杂亚基 $\epsilon$
别名	COPE, Epsilon-coat protein, epsilon-COP, Cope1, Coatomer protein complex subunit epsilon
免疫原	小鼠 COPE 重组蛋白
Uniprot ID	O89079
抗体亚型	IgG
纯化方式	亲和纯化
预测分子量 / 观测分子量	35 kDa / 35 kDa

## 应用

### WB 免疫印迹

物种: 小鼠, 大鼠

稀释比: 1: 300-1: 1000

阳性样品: 脊髓

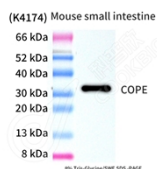
## 背景

The product of this gene is an epsilon subunit of coatomer protein complex. Coatomer is a cytosolic protein complex that binds to dilysine motifs and reversibly associates with Golgi non-clathrin-coated vesicles. It is required for budding from Golgi membranes, and is essential for the retrograde Golgi-to-ER transport of dilysine-tagged proteins. Coatomer complex consists of at least the alpha, beta, beta', gamma, delta, epsilon and zeta subunits. Alternatively spliced transcript variants encoding different isoforms have been identified.

## 储存条件

**储存条件:** 自收到之日起 -20°C下储存一年, 避免反复冻融。  
**储存缓冲液:** 含 0.15% ProClin300 防腐剂, 100  $\mu$ g/mL 牛血清白蛋白和 50%甘油的磷酸盐缓冲液。

## 图像



WB 检测 COPE 蛋白(货号 K1340671).  
 样品: 经 RIPA 裂解液(货号 KSG2002)处理的蛋白质.  
 封闭: 3%脱脂牛奶(货号 KSGC310001)溶于 TBST 溶液, 室温孵育 1 小时.  
 一抗: 1: 1000 稀释, 4°C 孵育过夜.  
 二抗: HRP 标记山羊抗兔 IgG (H+L) (货号 KB69909), 1: 5000 稀释, 室温孵育 1 小时.

For Research Use Only!

Ver. No.: V1-202603