

Anti-GAA1 兔多克隆抗体

K1340776 -20°C



产品信息

蛋白质全称	糖基磷脂酰肌醇锚定附着 1 蛋白
别名	GAA1, GAA1 protein homolog, GPAA1, hGAA1, GPI anchor attachment protein 1, mGAA1, Anchor attachment protein 1 (Gaalp, yeast) homolog, GPI transamidase subunit
免疫原	小鼠 GAA1 重组蛋白
Uniprot ID	Q9WTK3
抗体亚型	IgG
纯化方式	亲和纯化
亚细胞定位	内质网

应用

IHC/IF 免疫组织化学/免疫荧光

物种: 大鼠

稀释比: 1: 2000-1: 4000

阳性样品: 肾

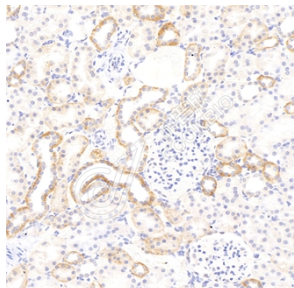
背景

GPAA1(Glycosylphosphatidylinositol anchor attachment 1 protein) is also named as GAA1. It is the most conspicuously hydrophobic of the known subunits of GPIT, and it may play a key role in substrate recognition. It is predicted to be a multispanning membrane protein of 67 kDa with seven transmembrane (TM) domains, a large luminal domain between the first two TM segments, and a cytoplasmically oriented N terminus bearing a potential ER retrieval signal in the form of a diarginine motif. It has 2 isoforms produced by alternative splicing and the full length protein has 2 glycosylation sites. This antibody is specific to GPAA1.

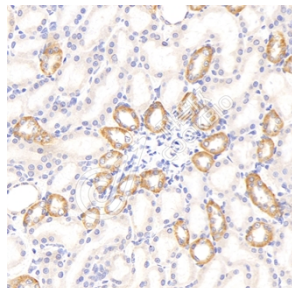
储存条件

储存条件: 自收到之日起 -20°C下储存一年, 避免反复冻融。
储存缓冲液: 含 0.15% ProClin300 防腐剂, 100 µg/mL 牛血清白蛋白和 50%甘油的磷酸盐缓冲液。

图像



IHC 检测 GAA1 蛋白(货号 K1340776).
 样品: 大鼠肾, 4%多聚甲醛 (货号 KSG1101) 固定 12-24 小时.
 抗原修复: 柠檬酸抗原修复液(干粉, pH 6.0) (KSG1201), 98°C, 20 分钟.
 一抗: 1: 3000 稀释, 4°C 孵育过夜.
 二抗: S-vision 免疫组化多聚二抗(山羊抗兔),即用型 (货号 KB3906), 室温孵育 20 分钟.



IHC 检测 GAA1 蛋白(货号 K1340776).
 样品: 大鼠肾, 4%多聚甲醛 (货号 KSG1101) 固定 12-24 小时.
 抗原修复: 柠檬酸抗原修复液(干粉, pH 6.0) (KSG1201), 98°C, 20 分钟.
 一抗: 1: 3000 稀释, 4°C 孵育过夜.
 二抗: S-vision 免疫组化多聚二抗(山羊抗兔),即用型 (货号 KB3906), 室温孵育 20 分钟.

For Research Use Only!

Ver. No.: V1-202603