

Anti-TSP50 兔多克隆抗体

K1340938 -20°C



产品信息

蛋白质全称	推定丝氨酸蛋白酶 PRSS50
别名	Cancer/testis antigen 20, CT20, PRSS50, Serine protease 50, Testis-specific protease-like protein 50, TSP50
免疫原	小鼠 TSP50 重组蛋白
Uniprot ID	Q8BLH5
抗体亚型	IgG
纯化方式	亲和纯化
预测分子量 / 观测分子量	49 kDa / 45 kDa

应用

WB 免疫印迹

物种：小鼠，大鼠

稀释比：1: 2000-1: 4000

阳性样品：肾

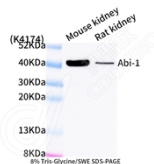
背景

TSP50 (Testis-specific protease-like protein 50) is also named as PRSS50, CT20 and belongs to the peptidase S1 family. It can enhance the expression of NFκB target genes involved in cell proliferation, and promotes cell proliferation, at least partially, through activation of the NFκB signalling pathway. There are two protein bands of 37 kDa and 43 kDa to be detected in human testes that the difference is most likely caused by posttranslational proteolytic cleavage. The full length protein has a signal peptide with 39 amino acids and two glycosylation sites.

储存条件

储存条件：自收到之日起 -20°C下储存一年，避免反复冻融。
储存缓冲液：含 0.15% ProClin300 防腐剂, 100 μg/mL 牛血清白蛋白和 50%甘油的磷酸盐缓冲液。

图像



WB 检测 TSP50 蛋白(货号 K1340938).
 样品: 经 RIPA 裂解液(货号 KSG2002)处理的蛋白质.
 封闭: 3%脱脂牛奶(货号 KSGC310001)溶于 TBST 溶液,
 室温孵育 1 小时.
 一抗: 1: 3000 稀释, 4°C 孵育过夜.
 二抗: HRP 标记山羊抗兔 IgG (H+L) (货号 KB69909), 1:
 5000 稀释, 室温孵育 1 小时.

For Research Use Only!

Ver. No.: V1-202603