

# Anti-RPS14 兔多克隆抗体

K1340971 -20°C



## 产品信息

蛋白质全称	40S 核糖体蛋白 S14
别名	EMTB, ribosomal protein S14, RPS14
免疫原	小鼠 RPS14 重组蛋白
Uniprot ID	P62264
抗体亚型	IgG
纯化方式	亲和纯化
预测分子量 / 观测分子量	16 kDa / 16 kDa

## 应用

### WB 免疫印迹

物种: 人, 小鼠  
 稀释比: 1: 300-1: 600  
 阳性样品: 肝

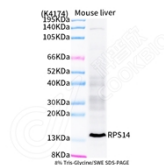
## 背景

The mammalian ribosome consists of 4 RNA species and approximately 80 different proteins. The ribosomal proteins are encoded by complex gene families that include at least 1 active intron-containing gene and multiple processed pseudogenes. The RPS14 gene, encoding a ribosomal protein that belongs to the 40S ribosome, and mapping to the commonly deleted region (CDR) of the 5q- syndrome, shows haploinsufficiency in the CD34+ cells of patients with this disorder.

## 储存条件

**储存条件:** 自收到之日起 -20°C下储存一年, 避免反复冻融。  
**储存缓冲液:** 含 0.15% ProClin300 防腐剂, 100 μg/mL 牛血清白蛋白和 50%甘油的磷酸盐缓冲液。

## 图像



WB 检测 RPS14 蛋白(货号 K1340971).  
 样品: 经 RIPA 裂解液(货号 KSG2002)处理的蛋白质.  
 封闭: 3%脱脂牛奶(货号 KSGC310001)溶于 TBST 溶液,  
 室温孵育 1 小时.  
 一抗: 1: 500 稀释, 4°C 孵育过夜.  
 二抗: HRP 标记山羊抗兔 IgG (H+L) (货号 KB69909), 1:  
 5000 稀释, 室温孵育 1 小时.

For Research Use Only!

Ver. No.: V1-202603