

Anti-Phospholipase A2 activator protein (PLAP) 兔多克隆抗体

K1341028 -20°C


产品信息

蛋白质全称	磷脂酶 A2 激活蛋白
别名	DOA1, PLA2P, PLAA, PLAP, Glycerophosphatase
免疫原	KLH 偶联的小鼠 Phospholipase A2 activator protein (PLAP)合成肽
Uniprot ID	P27612
抗体亚型	IgG
纯化方式	亲和纯化
预测分子量 / 观测分子量	87 kDa / 87 kDa

应用

WB 免疫印迹

物种：小鼠，大鼠

稀释比：1: 300-1: 600

阳性样品：海马区

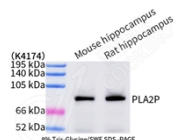
背景

Phospholipase A-2-activating protein (PLAA), also named PLAP, can interact with ubiquitin and is involved in the maintenance of ubiquitin levels. PLAA contains multiple consensus domains including WD repeats, PFU domain and PUL domain. Although the function of PLAA remains unclear, ubiquitin binding of PLAA might be the central role that connects ubiquitination and degradation in ERAD. Recent finding revealed that PLAA served as a novel nociceptive mediator after incision, and its expression level is regulated by miR-203.

储存条件

储存条件：自收到之日起 -20°C下储存一年，避免反复冻融。
储存缓冲液：含 0.15% ProClin300 防腐剂, 100 μg/mL 牛血清白蛋白和 50%甘油的磷酸盐缓冲液。

图像



WB 检测 Phospholipase A2 activator protein (PLAP) 蛋白(货号 K1341028)。
 样品：经 RIPA 裂解液(货号 KSG2002)处理的蛋白质。
 封闭：3%脱脂牛奶(货号 KSGC310001)溶于 TBST 溶液，室温孵育 1 小时。
 一抗：1: 500 稀释，4°C 孵育过夜。
 二抗：HRP 标记山羊抗兔 IgG (H+L) (货号 KB69909)，1: 5000 稀释，室温孵育 1 小时。

For Research Use Only!
Ver. No.: V1-202603