

Anti-Secretory phospholipase A2 兔多克隆抗体

K1341031 -20°C


产品信息

蛋白质全称	膜相关磷脂酶 A2
别名	Enhancing factor, Group IIA phospholipase A2, EF, GIIC sPLA2, Phosphatidylcholine 2-acylhydrolase 2A, Pla2g2a, NPS-PLA2, RASF A, PLA2B, PLA2, PLAS1, PLA2L
免疫原	KLH 偶联的小鼠 Secretory phospholipase A2 合成肽
Uniprot ID	P31482
抗体亚型	IgG
纯化方式	亲和纯化
亚细胞定位	细胞膜, 线粒体, 分泌型
预测分子量 / 观测分子量	16 kDa / 16 kDa

应用

WB 免疫印迹

物种: 小鼠
 稀释比: 1: 500-1: 1000
 阳性样品:

IHC/IF 免疫组织化学/免疫荧光

物种: 小鼠, 大鼠
 稀释比: 1: 200-1: 400
 阳性样品: 小肠

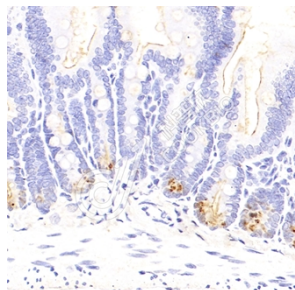
背景

The protein encoded by this gene is a member of the phospholipase A2 family (PLA2). PLA2s constitute a diverse family of enzymes with respect to sequence, function, localization, and divalent cation requirements. This gene product belongs to group II, which contains secreted form of PLA2, an extracellular enzyme that has a low molecular mass and requires calcium ions for catalysis. It catalyzes the hydrolysis of the sn-2 fatty acid acyl ester bond of phosphoglycerides, releasing free fatty acids and lysophospholipids, and thought to participate in the regulation of the phospholipid metabolism in biomembranes.

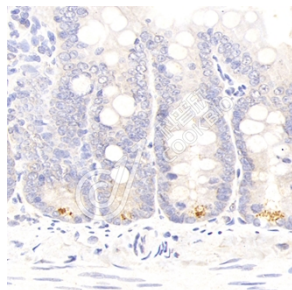
储存条件

储存条件: 自收到之日起 -20°C下储存一年, 避免反复冻融。
储存缓冲液: 含 0.15% ProClin300 防腐剂, 100 µg/mL 牛血清白蛋白和 50%甘油的磷酸盐缓冲液。

图像



IHC 检测 Secretory phospholipase A2 蛋白(货号 K1341031).
 样品: 小鼠小肠, 4%多聚甲醛 (货号 KSG1101) 固定 12-24 小时.
 抗原修复: 柠檬酸抗原修复液(干粉, pH 6.0) (KSG1201), 98°C, 20 分钟.
 一抗: 1: 300 稀释, 4°C 孵育过夜.
 二抗: S-vision 免疫组化多聚二抗(山羊抗兔),即用型 (货号 KB3906), 室温孵育 20 分钟.



IHC 检测 Secretory phospholipase A2 蛋白(货号 K1341031).
 样品: 大鼠小肠, 4%多聚甲醛 (货号 KSG1101) 固定 12-24 小时.
 抗原修复: 柠檬酸抗原修复液(干粉, pH 6.0) (KSG1201), 98°C, 20 分钟.
 一抗: 1: 300 稀释, 4°C 孵育过夜.
 二抗: S-vision 免疫组化多聚二抗(山羊抗兔),即用型 (货号 KB3906), 室温孵育 20 分钟.

For Research Use Only!

Ver. No.: V1-202603