

Anti-DNA polymerase eta 兔多克隆抗体

K1341034 -20°C



产品信息

| | |
|---------------|---|
| 蛋白质全称 | DNA 聚合酶η |
| 别名 | POLH, polymerase (DNA directed), eta, RAD30, RAD30 homolog A, RAD30A, XP-V, XPV, FLJ16395, FLJ21978, Xeroderma pigmentosum variant type protein homolog |
| 免疫原 | KLH 偶联的小鼠 DNA polymerase eta 合成肽 |
| Uniprot ID | Q9JJN0 |
| 抗体亚型 | IgG |
| 纯化方式 | 亲和纯化 |
| 预测分子量 / 观测分子量 | 76 kDa / 46 kDa |

应用

WB 免疫印迹

物种：人，小鼠，大鼠

稀释比：1: 2000-1: 4000

阳性样品：肝

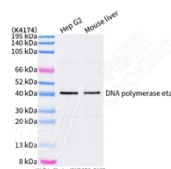
背景

This gene encodes a member of the Y family of specialized DNA polymerases. It copies undamaged DNA with a lower fidelity than other DNA-directed polymerases. However, it accurately replicates UV-damaged DNA; when thymine dimers are present, this polymerase inserts the complementary nucleotides in the newly synthesized DNA, thereby bypassing the lesion and suppressing the mutagenic effect of UV-induced DNA damage. This polymerase is thought to be involved in hypermutation during immunoglobulin class switch recombination.

储存条件

储存条件：自收到之日起 -20°C下储存一年，避免反复冻融。
储存缓冲液：含 0.15% ProClin300 防腐剂, 100 μg/mL 牛血清白蛋白和 50%甘油的磷酸盐缓冲液。

图像



WB 检测 DNA polymerase eta 蛋白(货号 K1341034).
 样品: 经 RIPA 裂解液(货号 KSG2002)处理的蛋白质.
 封闭: 3%脱脂牛奶(货号 KSGC310001)溶于 TBST 溶液, 室温孵育 1 小时.
 一抗: 1: 2000 稀释, 4°C 孵育过夜.
 二抗: HRP 标记山羊抗兔 IgG (H+L) (货号 KB69909), 1: 5000 稀释, 室温孵育 1 小时.

For Research Use Only!

Ver. No.: V1-202603