

Anti-FGF21 兔多克隆抗体

K1341139 -20°C



产品信息

蛋白质全称	成纤维细胞生长因子 21
别名	FGF-21, FGF21, UNQ3115, PRO10196
免疫原	KLH 偶联的小鼠 FGF21 合成肽
Uniprot ID	Q9JJN1
抗体亚型	IgG
纯化方式	亲和纯化
亚细胞定位	分泌型

应用

IHC/IF 免疫组织化学/免疫荧光

物种：人
 稀释比：1: 1000-1: 2000
 阳性样品：肝

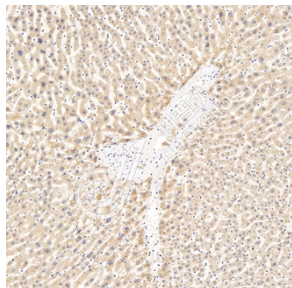
背景

Fibroblast growth factor 21 (FGF21), a member of the FGF superfamily, has emerged as an important metabolic regulator. FGF21 is produced in the liver, adipocytes and skeletal muscle and regulates glucose, energy and lipid metabolism. FGF21 is a stress-responsive hepatokine which is induced in the liver as a response to injury, regeneration, hepatocarcinogenesis and during kidney dysfunction. FGF21 is primarily metabolized in the kidney and renal secretion is the major route of FGF21 elimination. Its plasma levels increase according to the decline in renal function in patients with chronic and acute renal dysfunction.

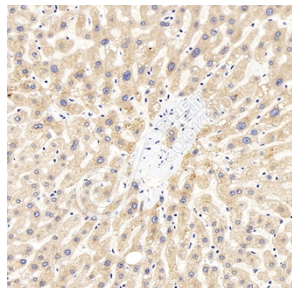
储存条件

储存条件：自收到之日起 -20°C下储存一年，避免反复冻融。
储存缓冲液：含 0.15% ProClin300 防腐剂, 100 µg/mL 牛血清白蛋白和 50%甘油的磷酸盐缓冲液。

图像



IHC 检测 FGF21 蛋白(货号 K1341139).
 样品: 人肝, 4%多聚甲醛 (货号 KSG1101) 固定 12-24 小时.
 抗原修复: 柠檬酸抗原修复液(干粉, pH 6.0) (KSG1201), 98°C, 20 分钟.
 一抗: 1: 1500 稀释, 4°C 孵育过夜.
 二抗: S-vision 免疫组化多聚二抗(山羊抗兔), 即用型 (货号 KB3906), 室温孵育 20 分钟.



IHC 检测 FGF21 蛋白(货号 K1341139).
 样品: 人肝, 4%多聚甲醛 (货号 KSG1101) 固定 12-24 小时.
 抗原修复: 柠檬酸抗原修复液(干粉, pH 6.0) (KSG1201), 98°C, 20 分钟.
 一抗: 1: 1500 稀释, 4°C 孵育过夜.
 二抗: S-vision 免疫组化多聚二抗(山羊抗兔), 即用型 (货号 KB3906), 室温孵育 20 分钟.

For Research Use Only!

Ver. No.: V1-202603