

# Anti-Carboxypeptidase B/CPB 兔多克隆抗体

K1341148 -20°C



## 产品信息

蛋白质全称	羧肽酶 B
别名	carboxypeptidase B1 (tissue), CPB, CPB1, Pancreas specific protein, PASP, PCPB
免疫原	KLH 偶联的人 Carboxypeptidase B/CPB 合成肽
Uniprot ID	P15086
抗体亚型	IgG
纯化方式	亲和纯化
预测分子量 / 观测分子量	47 kDa / 47 kDa

## 应用

### WB 免疫印迹

物种: 小鼠, 大鼠

稀释比: 1: 1000-1: 2000

阳性样品: 胰腺

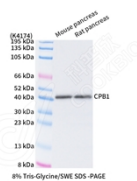
## 背景

PASP(pancreas-specific protein) is also named as CPB1, CPB, PCPB and belongs to the peptidase M14 family. This protein modulates the plasminogen system both in the matrix and on the cell surface, thus leading to the inhibition of endothelial cell movement and tube formation. It is initially described as a pancreatic metalloproteinase and is a marker for acute pancreatitis. The deduced 416-amino acid proenzyme has a 15-amino acid signal peptide and a 95-amino acid activation peptide.

## 储存条件

**储存条件:** 自收到之日起 -20°C下储存一年, 避免反复冻融。  
**储存缓冲液:** 含 0.15% ProClin300 防腐剂, 100 μg/mL 牛血清白蛋白和 50%甘油的磷酸盐缓冲液。

## 图像



WB 检测 Carboxypeptidase B/CPB 蛋白(货号 K1341148).  
 样品: 经 RIPA 裂解液(货号 KSG2002)处理的蛋白质.  
 封闭: 3%脱脂牛奶(货号 KSGC310001)溶于 TBST 溶液, 室温孵育 1 小时.  
 一抗: 1: 1000 稀释, 4°C 孵育过夜.  
 二抗: HRP 标记山羊抗兔 IgG (H+L) (货号 KB69909), 1: 5000 稀释, 室温孵育 1 小时.

For Research Use Only!

Ver. No.: V1-202603