

Anti-Pancreatic Lipase/PTL 兔多克隆抗体

K1341349 -20°C



产品信息

| | |
|---------------|---|
| 蛋白质全称 | 胰甘油三酯脂肪酶 |
| 别名 | Lipase, Pancreatic Lipase, PL, PNLIP, PTL |
| 免疫原 | KLH 偶联的小鼠 Pancreatic Lipase/PTL 合成肽 |
| Uniprot ID | Q6P8U6 |
| 抗体亚型 | IgG |
| 纯化方式 | 亲和纯化 |
| 亚细胞定位 | 分泌型 |
| 预测分子量 / 观测分子量 | 51 kDa / 51 kDa |

应用

WB 免疫印迹

物种: 小鼠, 大鼠
 稀释比: 1: 1000-1: 3000
 阳性样品:

IHC/IF 免疫组织化学/免疫荧光

物种: 小鼠, 大鼠
 稀释比: 1: 200-1: 400
 阳性样品: 胰腺

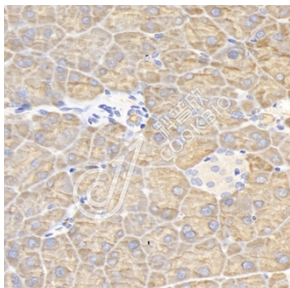
背景

The pancreatic triacylglycerol lipase precursor (PNLIP), a 56 kDa protein secreted by the pancreas that is essential for the hydrolysis and absorption of long-chain triglyceride fatty acids in the intestine is located 21 Mb upstream from the chromosome 10 peak. It is also named as PL, PTL and belongs to the AB hydrolase superfamily. It may potentially be involved in the pathophysiology of traumatic brain injury and may be implicated in the proliferation of astrocytes and the recovery of neurological outcomes. The full length protein has a signal peptide with 16 amino acid and a glycosylation site.

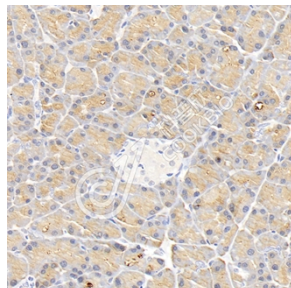
储存条件

储存条件: 自收到之日起 -20°C下储存一年, 避免反复冻融。
储存缓冲液: 含 0.15% ProClin300 防腐剂, 100 µg/mL 牛血清白蛋白和 50%甘油的磷酸盐缓冲液。

图像



IHC 检测 Pancreatic Lipase/PTL 蛋白(货号 K1341349).
 样品: 小鼠胰腺, 4%多聚甲醛 (货号 KSG1101) 固定 12-24 小时.
 抗原修复: 柠檬酸抗原修复液(干粉, pH 6.0) (KSG1201), 98°C, 20 分钟.
 一抗: 1:300 稀释, 4°C 孵育过夜.
 二抗: S-vision 免疫组化多聚二抗(山羊抗兔), 即用型 (货号 KB3906), 室温孵育 20 分钟.



IHC 检测 Pancreatic Lipase/PTL 蛋白(货号 K1341349).
 样品: 大鼠胰腺, 4%多聚甲醛 (货号 KSG1101) 固定 12-24 小时.
 抗原修复: 柠檬酸抗原修复液(干粉, pH 6.0) (KSG1201), 98°C, 20 分钟.
 一抗: 1:300 稀释, 4°C 孵育过夜.
 二抗: S-vision 免疫组化多聚二抗(山羊抗兔), 即用型 (货号 KB3906), 室温孵育 20 分钟.

For Research Use Only!

Ver. No.: V1-202603