

# Anti-PARVA 兔多克隆抗体

K1341436 -20°C



## 产品信息

蛋白质全称	α-踝蛋白
别名	Actopaxin, Alpha Parvin/Actopaxin, CH ILKBP, MXRA2, PARVA, parvin, alpha, α-Parvin, MNCb-0301, Actp
免疫原	KLH 偶联的小鼠 PARVA 合成肽
Uniprot ID	Q9EPC1
抗体亚型	IgG
纯化方式	亲和纯化
预测分子量 / 观测分子量	42 kDa / 45 kDa

## 应用

### WB 免疫印迹

物种：小鼠

稀释比：1: 500-1: 1000

阳性样品：肾

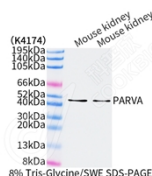
## 背景

Plays a role in sarcomere organization and in smooth muscle cell contraction. Required for normal development of the embryonic cardiovascular system, and for normal septation of the heart outflow tract. Plays a role in sprouting angiogenesis and is required for normal adhesion of vascular smooth muscle cells to endothelial cells during blood vessel development. Plays a role in the reorganization of the actin cytoskeleton, formation of lamellipodia and ciliogenesis. Plays a role in the establishment of cell polarity, cell adhesion, cell spreading, and directed cell migration.

## 储存条件

**储存条件：**自收到之日起 -20°C下储存一年，避免反复冻融。  
**储存缓冲液：**含 0.15% ProClin300 防腐剂, 100 μg/mL 牛血清白蛋白和 50%甘油的磷酸盐缓冲液。

## 图像



WB 检测 PARVA 蛋白(货号 K1341436).  
 样品: 经 RIPA 裂解液(货号 KSG2002)处理的蛋白质.  
 封闭: 3%脱脂牛奶(货号 KSGC310001)溶于 TBST 溶液,  
 室温孵育 1 小时.  
 一抗: 1: 500 稀释, 4°C 孵育过夜.  
 二抗: HRP 标记山羊抗兔 IgG (H+L) (货号 KB69909), 1:  
 5000 稀释, 室温孵育 1 小时.

For Research Use Only!

Ver. No.: V1-202603